

**Hopewell Valley Community Stewardship Plan
Friends of Hopewell Valley Open Space**

**Appendix 12.
Huber Preserve**

Acreage: 0.99

Block and Lot: B31, L75

Ownership: FoHVOS (100%)

Year(s) Purchased: 2003

Location & Access: Preserve is located on the south side of Harbourton-Woodsville Road. Parking access along road shoulder. Caution: Road shoulder is very narrow. Parking may be accommodated on Mr. Ridolfi's driveway with prior permission only. Nearest street address: 26 Harbourton-Woodsville Road, Pennington, NJ 08534.

Structures: None

Additional property information is summarized in Appendix W. The following Preserve maps are provided at the end of this document:

- Map 1 2007 Aerial Photography
- Map 2 1930 Aerial Photography
- Map 3 Topography
- Map 4 Bedrock Geology
- Map 5 Soils
- Map 6 Land Cover Types (2007)
- Map 7 Protected Lands
- Map 8 Deer Management
- Map 9 Invasive Plant Cover (Relative Infestation Severity for all species)

Website Description:

Huber Preserve is a forested tract along pastoral Harbourton Woodsville Road. Black oak, American beech, maple leaf viburnum, and black birch grow here. The parcel is located near a hub of larger FoHVOS preserves.

BROAD PROPERTY DESCRIPTION

The Huber Preserve (see Map 1) is located in north central Hopewell Township. The topography (see Map 3) is relatively flat with a slight slope from the southwest to the northeast.

Based upon analysis of NJDEP's 2007 Land Use/Land Cover dataset, the preserve contains two broad plant communities: Deciduous Forest (> 50% canopy) - Upland and Agricultural. Land Use/Land Cover is summarized in Appendix X and illustrated in Map 6.

The preserve is forested with black birch, red oak, shagbark hickory, black and Mazzard cherries, flowering dogwood, Virginia creeper, maple leaf viburnum, enchanter's nightshade, and jack-in-the-pulpit making up the native plant community.

The preserve has one type of bedrock geology--the Stockton formation. See Map 4.

**Hopewell Valley Community Stewardship Plan
Friends of Hopewell Valley Open Space**

The preserve has one soil type (see Map 5)--Quakertown silt loam, 2 to 6 percent slopes. The preserve's soils are described in Appendix Y.

CONSERVATION VALUES

Based on an analysis involving the ranking of ecological values and threats (See Community Stewardship Plan text), the Preserve has a weighted Ecological Value at 25-50%. See Appendix A for a description of ranking factors.

Forest and Woodland Communities: The patch on the preserve connects to a highly fragmented forest.

Old forest: 0.31 acres of the preserve were forested in 1930. See Map 2.

Early Successional Communities:

Shrublands: N/A

Meadows/Grasslands: N/A

Waterbodies: N/A

Rare Species:

Rare Plants: None documented on the Preserve. Natural Heritage grid data shows no species.

Rare Animals: None documented on the Preserve. Forested areas of the Preserve are identified as habitat for State Threatened and Special Concern species.

THREATS

Deer: The understory is severely browsed. Regeneration of the shrub and canopy layer is nearly non-existent.

Invasives species: In 2008 staff began walk-through surveys for emerging invasive species on all preserves. (Mapping documented each species and its population size. No species were detected. See www.njisst.org for the current status of emerging invasive species at the Preserve.

In 2011 staff completed surveys for invasive plant species on all preserves (see Map 9). Mapping documented each species found and its population size (See Table 1 below). The five species with the highest infestation scores include: Garlic Mustard, Wineberry, Multifloral Rose, Non-native cool season grass, and Autumn Olive.

Other: N/A

STRATEGIES and ACTIONS

Forest and Woodland Habitat Stewardship: Annual surveys for and eradication of emerging invasive species is a high priority at this Preserve. Reduced deer density will allow the native plant communities to recover and compete with all other widespread invasive species on a long-term basis.

Early Successional Habitat Stewardship: N/A

Deer Management: The preserve is too small to be enrolled in the DMP. See Map 8 for delineations of the 150' and 450' safety zones and hunting status.

**Hopewell Valley Community Stewardship Plan
Friends of Hopewell Valley Open Space**

Rare Species Management: N/A.

Neighboring Lands: Because of the small size of the preserve, no action is recommended. See Map 7 for adjacent protected lands.

Waterbodies Management: N/A

Undesirable Activities Management: N/A

Scientific Research Assessment: The Preserve is available for scientific research.

Recreational Opportunities Assessment: The preserve is too small to support a trail.

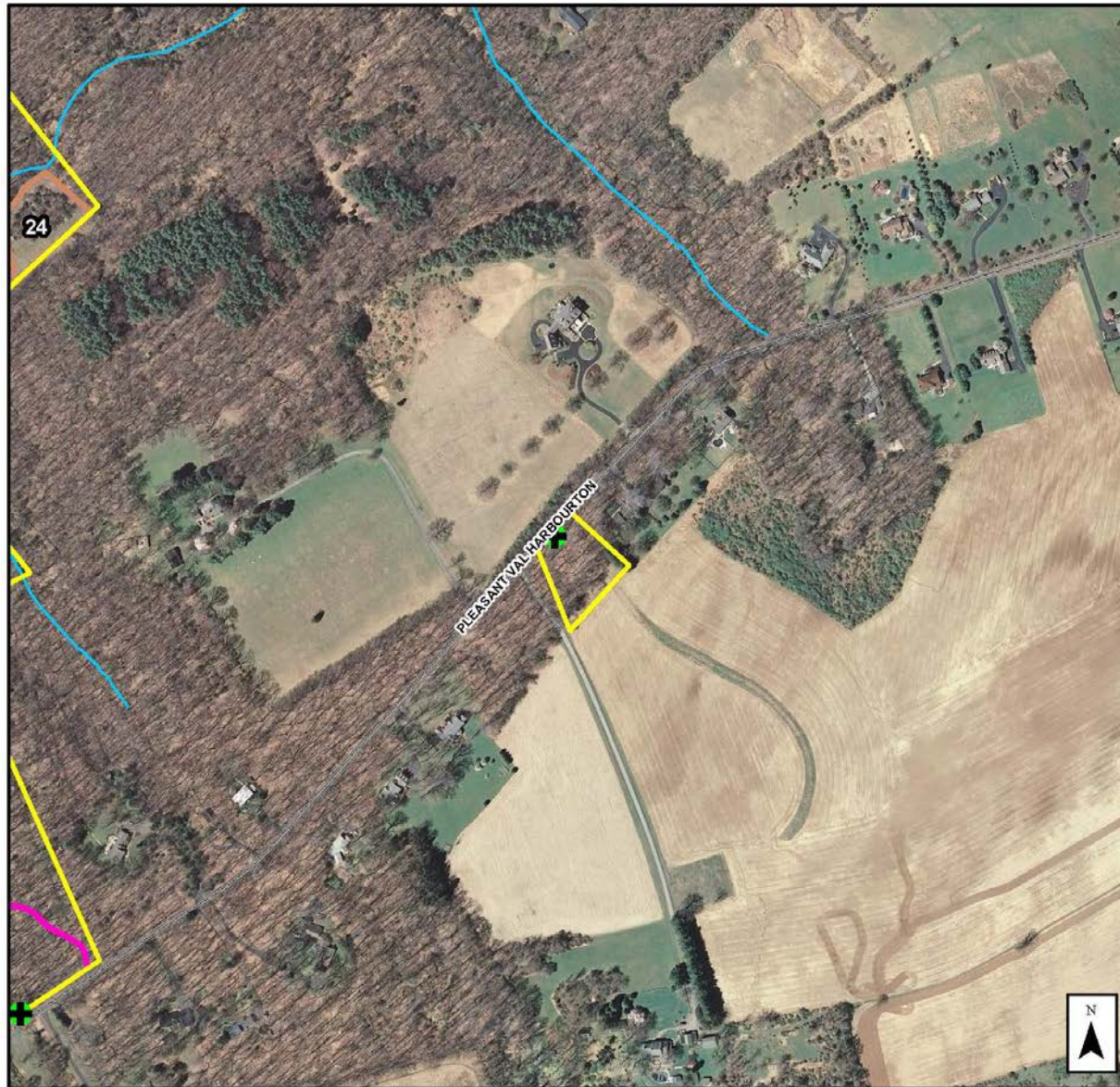
**Hopewell Valley Community Stewardship Plan
Friends of Hopewell Valley Open Space**

Table 1. Invasive Plants – Species Abundance and Treatment Recommendations

Scientific Name	Common Name	Infestation Index Score ¹	Total Acres Present	Percent of Preserve Area Present	Treatment Recommendation	LOE Estimate (Hours)	Acreage by Percent Ground Cover Categories						
							Category 0: 0%	Category: Trace	Category 1: 1-10%	Category 2: 10-25%	Category 3: 25-50%	Category 4: 50-75%	Category 5: 75-100%
<i>Acer palmatum</i>	Japanese Maple	0.0	0.0	0.0	N/A		0.99	0.0	0.0	0.0	0.0	0.0	0.0
<i>Acer platanoides</i>	Norway Maple	0.0	0.0	0.0	N/A		0.99	0.0	0.0	0.00	0.0	0.00	0.0
<i>Ailanthus altissima</i>	Tree-of-Heaven	0.0	0.0	0.0	N/A		0.99	0.0	0.0	0.0	0.0	0.0	0.0
<i>Alliaria petiolata</i>	Garlic Mustard	3.7	0.9	85.9	None		0.14	0.0	0.1	0.1	0.0	0.0	0.7
<i>Artemisia vulgaris</i>	Common Mugwort	0.1	0.1	11.1	None		0.88	0.0	0.1	0.0	0.0	0.0	0.0
<i>Arthraxon hispidus</i>	Small Carpgrass	0.0	0.0	0.0	N/A		0.99	0.0	0.0	0.0	0.0	0.0	0.0
<i>Berberis thunbergii</i>	Japanese Barberry	0.0	0.0	0.0	N/A		0.99	0.0	0.0	0.0	0.0	0.0	0.0
<i>Cardamine impatiens</i>	Narrow-leaved Bittercress	0.0	0.0	0.0	N/A		0.99	0.0	0.0	0.0	0.0	0.0	0.0
<i>Catalpa bignonioides</i>	Northern Catalpa	0.0	0.0	0.0	N/A		0.99	0.0	0.0	0.0	0.0	0.0	0.0
<i>Celastrus orbiculatus</i>	Asiatic Bittersweet	0.0	0.0	0.0	N/A		0.99	0.0	0.0	0.0	0.00	0.0	0.0
<i>Centurea sp.</i>	Knapsweed sp.	0.0	0.0	0.0	N/A		0.99	0.0	0.0	0.0	0.0	0.0	0.0
<i>Cirsium arvense</i>	Canada Thistle	0.0	0.0	0.0	N/A		0.99	0.0	0.0	0.0	0.0	0.0	0.0
<i>Dipsacus sylvestris</i>	Teasel	0.0	0.0	0.0	N/A		0.99	0.0	0.00	0.0	0.0	0.0	0.0
<i>Eleagnus umbellata</i>	Autumn Olive	0.7	0.7	68.7	None		0.31	0.0	0.7	0.0	0.0	0.0	0.0
<i>Euonymus alata</i>	Winged Burning Bush	0.0	0.0	0.0	N/A		0.99	0.0	0.0	0.0	0.0	0.0	0.00
<i>Iris pseudoacris</i>	Yellow Iris	0.0	0.0	0.0	N/A		0.99	0.0	0.0	0.0	0.0	0.0	0.0
<i>Lespedeza cuneata</i>	Chinese Bushclover	0.0	0.0	0.0	N/A		0.99	0.0	0.0	0.0	0.0	0.0	0.0
<i>Ligustrum obtusifolium</i>	Border Privet	0.0	0.0	0.0	N/A		0.99	0.0	0.00	0.0	0.0	0.0	0.0
<i>Lonicera japonica</i>	Japanese Honeysuckle	0.7	0.7	68.7	None		0.31	0.0	0.7	0.0	0.0	0.0	0.0
<i>Lonicera maackii</i>	Amur Honeysuckle	0.0	0.0	0.0	N/A		0.99	0.0	0.0	0.0	0.0	0.0	0.0
<i>Lonicera morrowii</i>	Morrow's Honeysuckle	0.0	0.0	0.0	N/A		0.99	0.0	0.0	0.0	0.00	0.0	0.0
<i>Lysimachia nummularia</i>	Moneywort	0.0	0.0	0.0	N/A		0.99	0.0	0.0	0.0	0.0	0.0	0.0
<i>Lythrum salicaria</i>	Purple Loosestrife	0.0	0.0	0.0	N/A		0.99	0.0	0.0	0.0	0.0	0.0	0.0
<i>Malus toringo</i>	Toringo Crabapple	0.0	0.0	0.0	N/A		0.99	0.0	0.0	0.0	0.0	0.0	0.0
<i>Microstegium vimineum</i>	Japanese Stiltgrass	0.1	0.1	6.1	None		0.93	0.0	0.0	0.1	0.0	0.0	0.0
N/A	Non-native, cool season grass	0.7	0.1	14.1	None		0.85	0.0	0.0	0.0	0.0	0.0	0.1
<i>Phalaris arundinacea</i>	Reed Canary Grass	0.0	0.0	0.0	N/A		0.99	0.0	0.0	0.0	0.0	0.0	0.0
<i>Phragmites australis</i>	Common Reed	0.0	0.0	0.0	N/A		0.99	0.0	0.0	0.0	0.0	0.0	0.0
<i>Polygonum cuspidatum</i>	Japanese Knotweed	0.0	0.0	0.0	N/A		0.99	0.0	0.0	0.0	0.0	0.0	0.0
<i>Polygonum perfoliatum</i>	Mile-a-Minute	0.0	0.0	0.0	N/A		0.99	0.0	0.0	0.0	0.0	0.0	0.0
<i>Pyrus calleryana</i>	Callery Pear	0.0	0.0	0.0	N/A		0.99	0.0	0.0	0.0	0.0	0.0	0.0
<i>Ranunculus ficaria</i>	Lesser Celandine	0.0	0.0	0.0	N/A		0.99	0.0	0.0	0.0	0.0	0.0	0.0
<i>Robinia pseudoacacia</i>	Black Locust	0.0	0.0	0.0	N/A		0.99	0.0	0.0	0.0	0.0	0.0	0.0
<i>Rosa multiflora</i>	Multiflora Rose	1.0	0.8	79.8	None		0.20	0.0	0.7	0.0	0.1	0.0	0.0
<i>Rubus phoenicolasius</i>	Wineberry	1.1	0.8	79.8	None		0.20	0.0	0.7	0.0	0.0	0.1	0.0
<i>Securigera varia</i>	Crown vetch	0.0	0.0	0.0	N/A		0.99	0.0	0.0	0.0	0.0	0.0	0.0
<i>Viburnum dilatatum</i>	Linden Viburnum	0.0	0.0	0.0	N/A		0.99	0.0	0.0	0.0	0.0	0.0	0.0
<i>Viburnum sieboldii</i>	Siebold's Viburnum	0.0	0.0	0.0	N/A		0.99	0.0	0.0	0.0	0.0	0.0	0.0
<i>Wisteria floribunda</i>	Japanese Wisteria	0.0	0.0	0.0	N/A		0.99	0.0	0.0	0.0	0.0	0.0	0.0
Total LOE						0							

¹ The Infestation Index Score combines the extent of acreage infested and the intensity of the infestation. It was derived by multiplying the cover class number by the number of acres within each cover class.

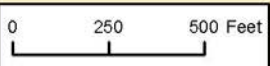
**Hopewell Valley Community Stewardship Plan
Friends of Hopewell Valley Open Space**



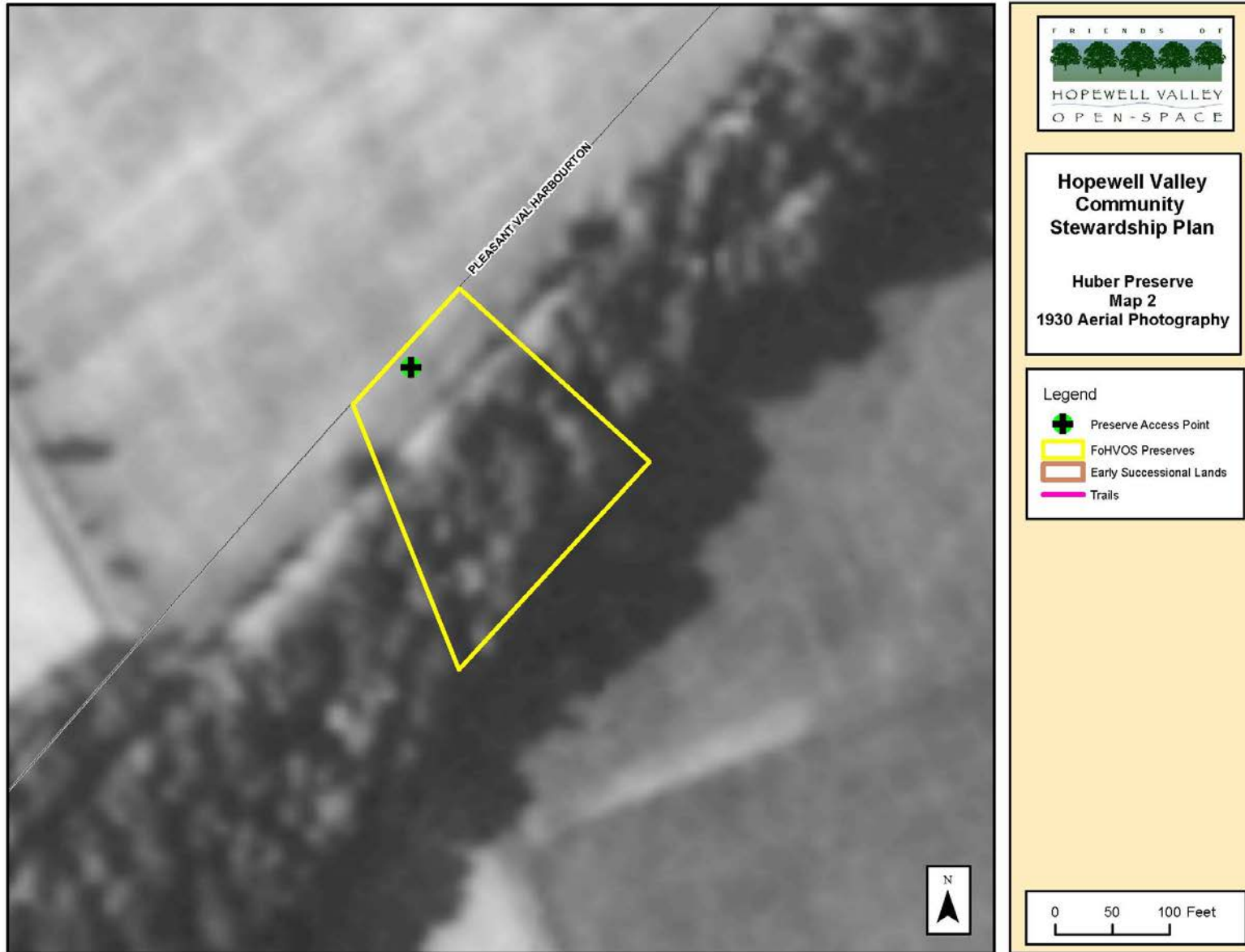
**Hopewell Valley
Community
Stewardship Plan**

**Huber Preserve
Map 1
2007 Aerial Photography**

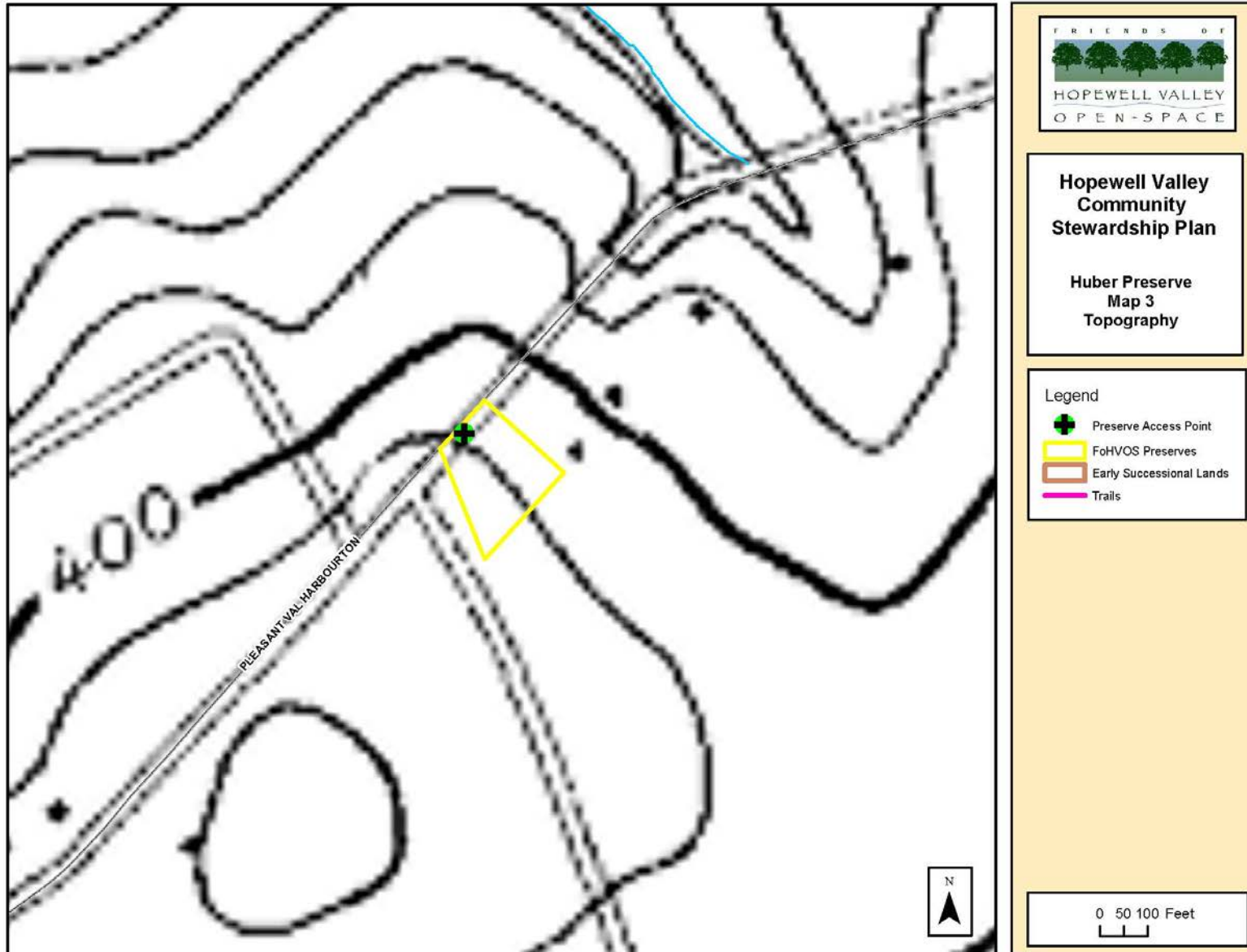
- Legend
- Preserve Access Point
 - FoHVOS Preserves
 - Early Successional Lands
 - Trails



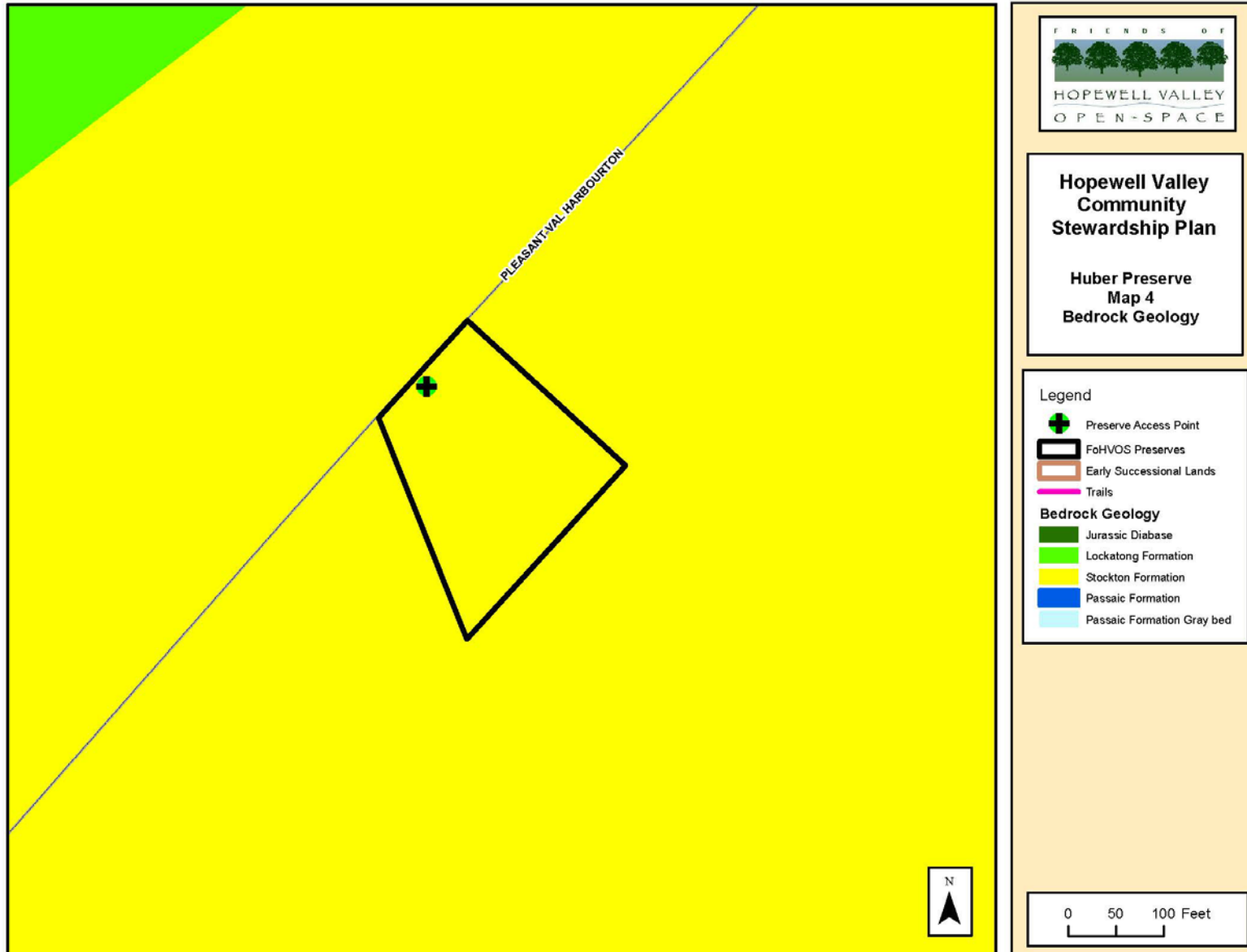
**Hopewell Valley Community Stewardship Plan
Friends of Hopewell Valley Open Space**



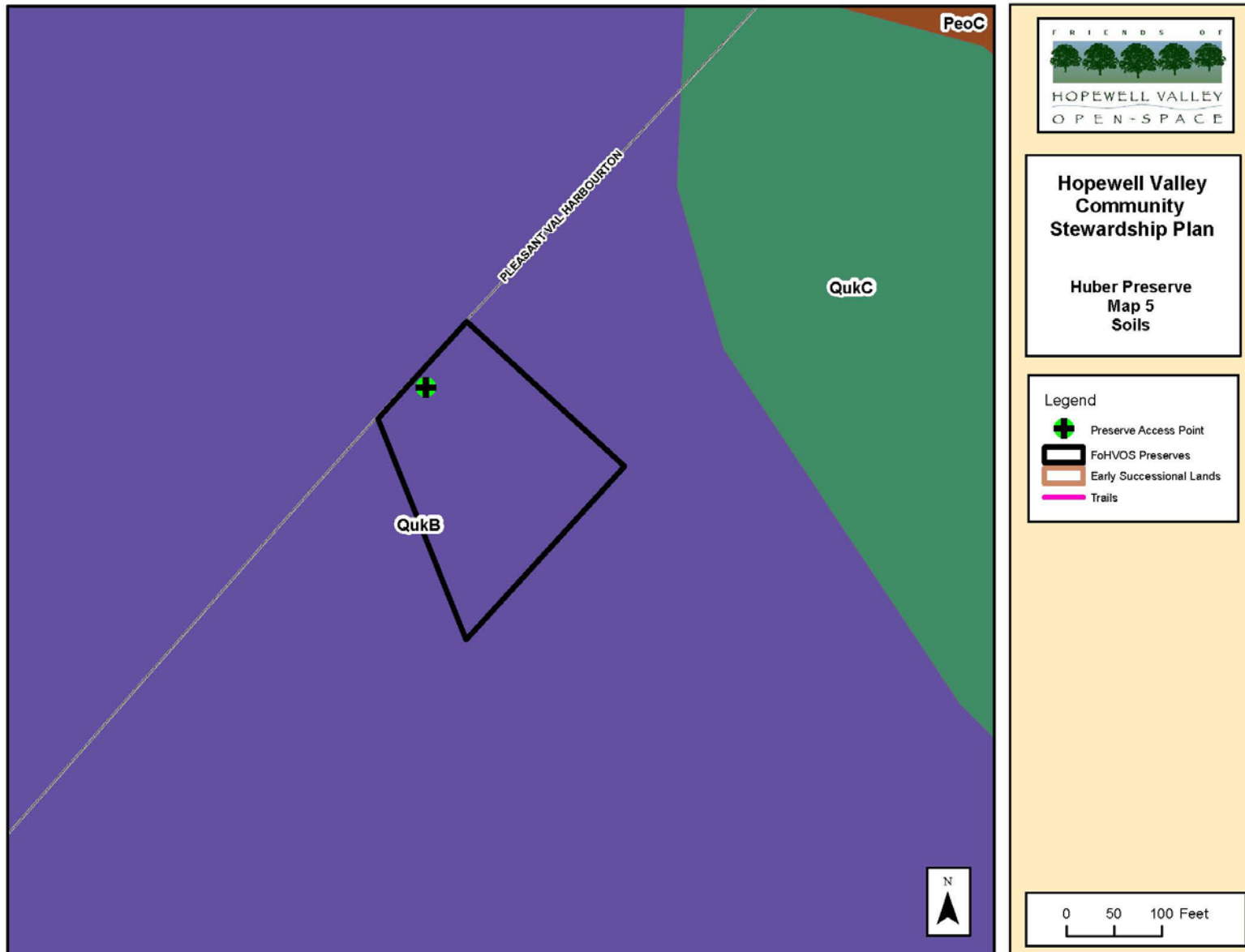
Hopewell Valley Community Stewardship Plan
Friends of Hopewell Valley Open Space



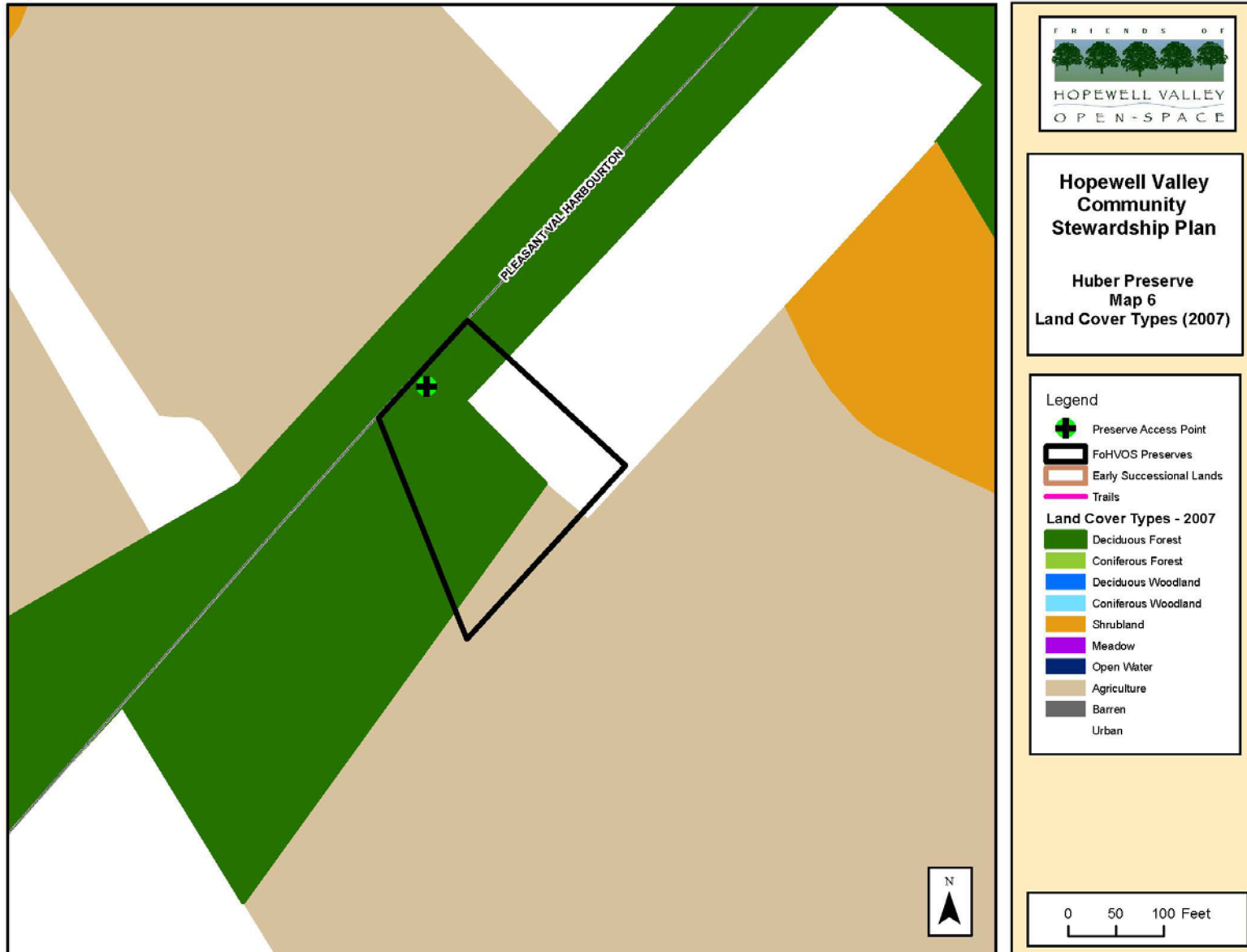
Hopewell Valley Community Stewardship Plan
Friends of Hopewell Valley Open Space



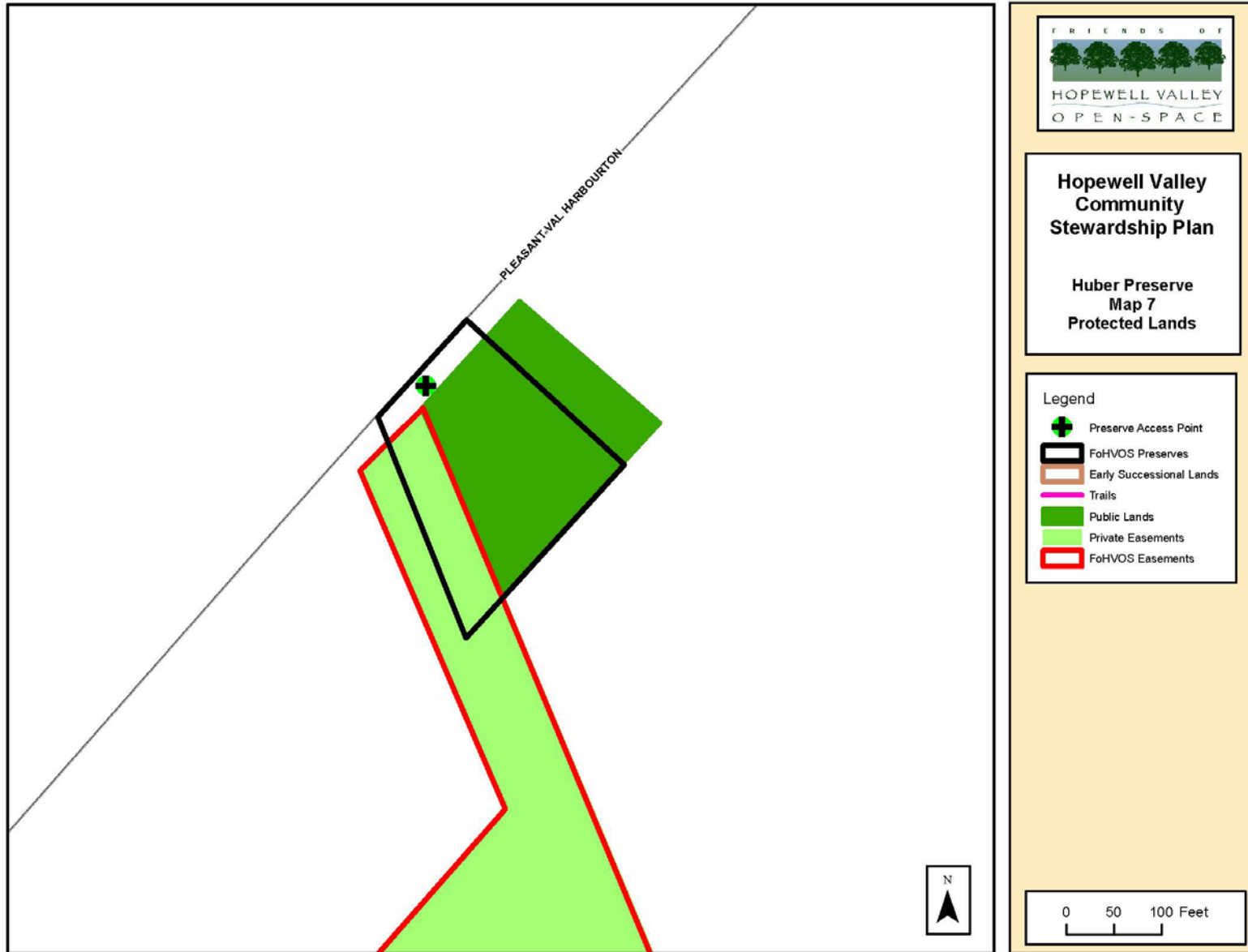
Hopewell Valley Community Stewardship Plan
Friends of Hopewell Valley Open Space



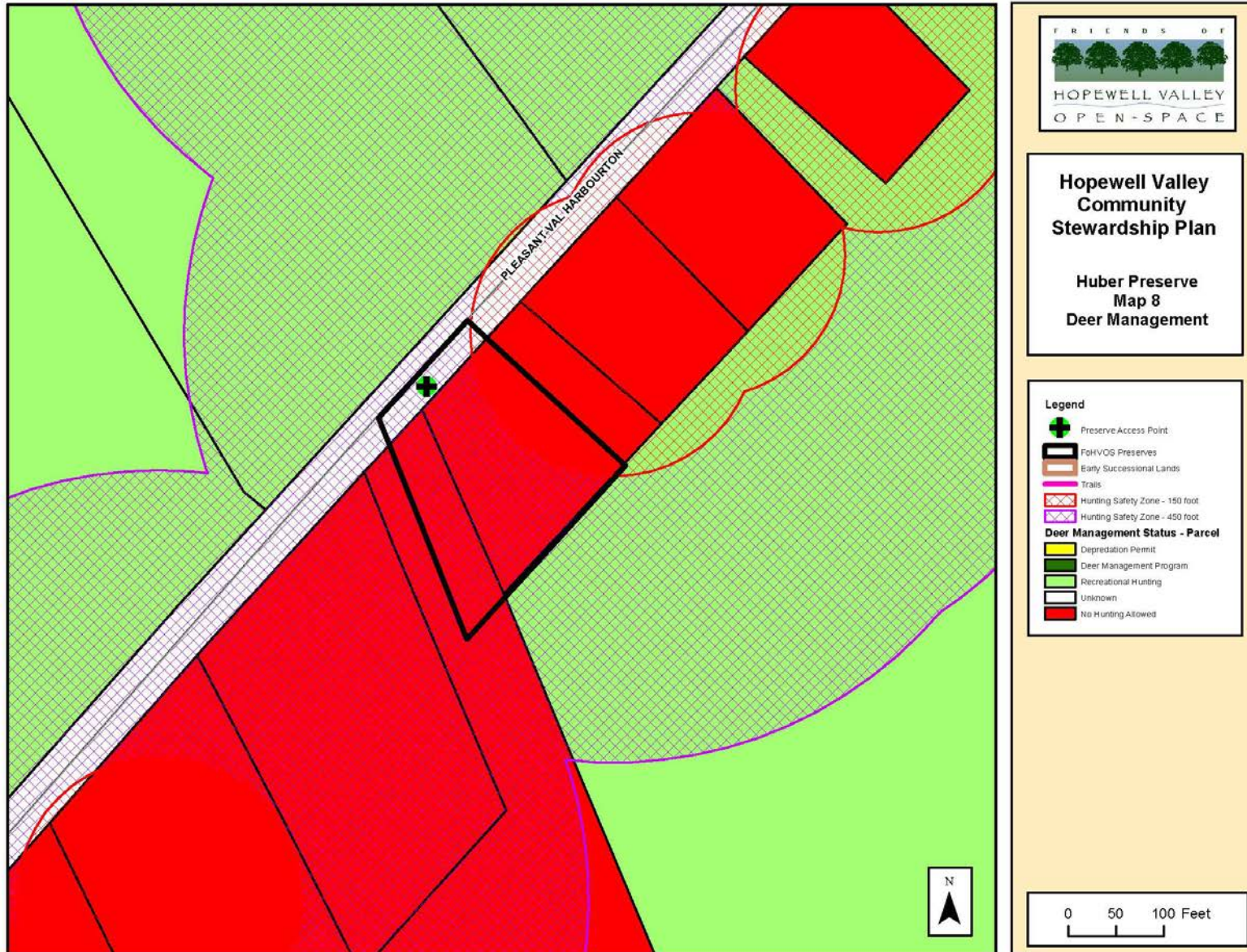
Hopewell Valley Community Stewardship Plan
Friends of Hopewell Valley Open Space



Hopewell Valley Community Stewardship Plan
Friends of Hopewell Valley Open Space



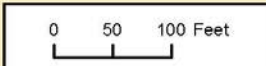
**Hopewell Valley Community Stewardship Plan
Friends of Hopewell Valley Open Space**



**Hopewell Valley
Community
Stewardship Plan**

**Huber Preserve
Map 8
Deer Management**

- Legend**
- Preserve Access Point
 - FohVOS Preserves
 - Early Successional Lands
 - Trails
 - Hunting Safety Zone - 150 foot
 - Hunting Safety Zone - 450 foot
- Deer Management Status - Parcel**
- Depredation Permit
 - Deer Management Program
 - Recreational Hunting
 - Unknown
 - No Hunting Allowed



Hopewell Valley Community Stewardship Plan
Friends of Hopewell Valley Open Space

