

**Hopewell Valley Community Stewardship Plan
Friends of Hopewell Valley Open Space**

**Appendix 15.
Lipp/Lewellen Preserve**

Acreage: 3.856

Block and Lot: B18, L20

Ownership: FoHVOS (100%)

Year(s) Purchased: 1998

Location & Access: The preserve is located on the north side of Crusher Road, approximately 2.0 miles east of the Route 654. **Nearest street address:** 106 Crusher Road, Hopewell, NJ 08525. Parking is available along the road, but shoulder is narrow. NOTE: Preserve is land-locked and does not have any road frontage on Crusher Road.

Structures: None

Additional property information is summarized in Appendix W. The following Preserve maps are provided at the end of this document:

- Map 1 2007 Aerial Photography
- Map 2 1930 Aerial Photography
- Map 3 Topography
- Map 4 Bedrock Geology
- Map 5 Soils
- Map 6 Land Cover Types (2007)
- Map 7 Protected Lands
- Map 8 Deer Management
- Map 9 Invasive Plant Cover (Relative Infestation Severity for all species)

Website Description:

Lipp Lewellen Preserve protects a portion of the Mount Rose region's upland forest. Spicebush, maple leaf viburnum grow under a canopy of American beech, American linden and tulip tree.

BROAD PROPERTY DESCRIPTION

The Lipp Lewellen Preserve (see Map 1) is located in eastern Hopewell Township. The topography (see Map 3) is flat at about 280 feet above sea level.

Based upon analysis of NJDEP's 2007 Land Use/Land Cover dataset, the preserve contains one broad plant community: Deciduous Forest (> 50% canopy) – Upland. The preserve is surrounded by forest, farmland, and residential parcels. Land Use/Land Cover is summarized in Appendix X and illustrated in Map 6.

The forest's native species composition is comprised of tulip tree, ash, Virginia creeper, maple leaf viburnum, spicebush, black cohosh, and sedges. Herbaceous plants are found only in small populations.

The preserve has one type of bedrock geology--the Jurassaic formation. See Map 4.

The preserve has one soil type (see Map 5) -- Neshaminy silt loam, 6 to 12 percent slopes, very stony. The preserve's soils are described in Appendix Y.

**Hopewell Valley Community Stewardship Plan
Friends of Hopewell Valley Open Space**

CONSERVATION VALUES

Based on an analysis involving the ranking of ecological values and threats (See Community Stewardship Plan text), the Preserve has a weighted Ecological Value of 25-50%. See Appendix A for a description of ranking factors.

Forest and Woodland Communities: The preserve is part of the Mount Rose large forest patch.

The forest patch found on the Preserve and surrounding area is an important stop-over habitat (spring and fall resting and feeding) for migratory species. The relatively thick shrub layer (primarily spicebush with small patches of maple leaved viburnum) increases the chance of nesting and successful breeding. However, the shrub layer is being rapidly reduced by deer browse (based upon visual observations over the last five years).

Old forest: The entirety of the preserve was forested in the 1930s. See Map 2.

Early Successional Communities:

Shrublands: N/A

Meadows/Grasslands: N/A

Waterbodies: N/A

Rare Species:

Rare Plants: None.

Rare Animals: The Landscape Project has identified the Preserve as ranked for species of State Endangered, Threatened, and Special Concern Species. The Preserve has suitable wood turtle habitat in the eastern areas.

See Appendix L for a list of species.

THREATS

Deer: The understory and herb layers are robust (but declining) - suckering stems are heavily browsed. Regeneration of maple leaf viburnum is minimal.

Invasive species: In 2008 staff began walk-through surveys for emerging invasive species on all preserves. Mapping documented each species and its population size. There were no emerging species detected at the Preserve. See www.njisst.org for the current status of emerging invasive species at the Preserve.

In 2011 staff completed surveys for invasive plant species on all preserves (see Map 9). Mapping documented each species found and its population size (See Table 1 below). The three species with the highest infestation scores include: Japanese Barberry, Japanese Stiltgrass, and Wineberry. Asiatic bittersweet and Winged burning bush were detected in trace amounts.

Other: N/A

Hopewell Valley Community Stewardship Plan
Friends of Hopewell Valley Open Space

STRATEGIES and ACTIONS

Forest and Woodland Habitat Stewardship: Annual surveys for and eradication of emerging invasive species is a high priority at this Preserve.

No action is recommended for widespread invasive species, except for winged burning bush and Asiatic bittersweet. All fruiting and flowering individuals should be treated with basal bark or cut stump (in the case of vines on trees) methods. Reduced deer density will allow the native plant communities to recover and compete with all other widespread invasive species on a long-term basis.

Early Successional Habitat Stewardship: N/A

Deer Management: The preserve is not enrolled in the DMP. There is no access to the preserve, except across private land. If feasible, improve access through adjacent lands. See Map 8 for delineations of the 150' and 450' safety zones and hunting status.

Rare Species Management: N/A

Neighboring Lands: See Map 7 for adjacent protected lands.

Waterbodies Management: N/A

Undesirable Activities Management: N/A

Scientific Research Assessment: The Preserve is available for scientific research.

Recreational Opportunities Assessment: The preserve does not have road frontage and is too small to support a trail.

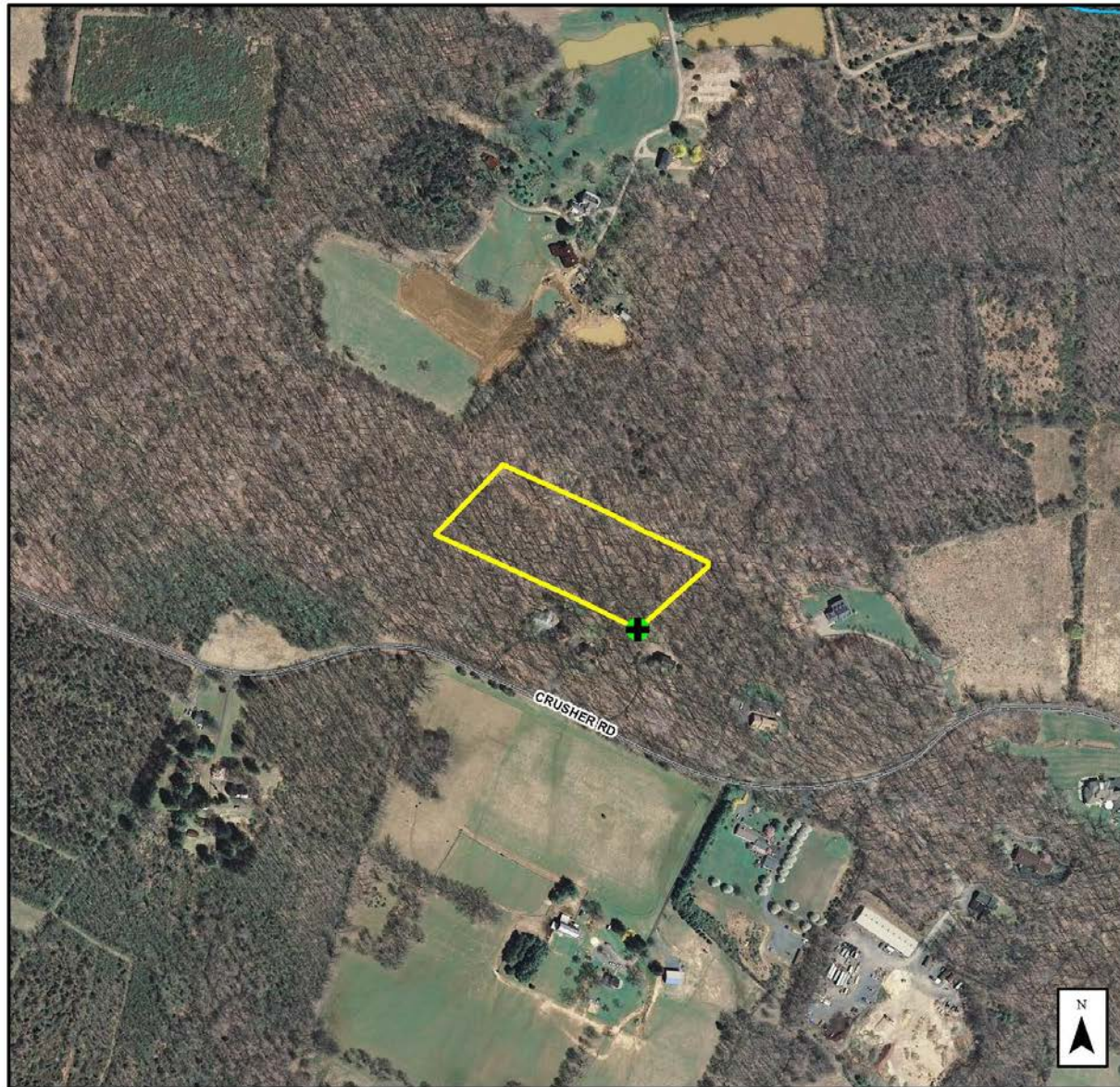
**Hopewell Valley Community Stewardship Plan
Friends of Hopewell Valley Open Space**

Table 1. Invasive Plants – Species Abundance and Treatment Recommendations

Scientific Name	Common Name	Infestation Index Score ¹	Total Acres Present	Percent of Preserve Area Present	Treatment Recommendation	LOE Estimate (Hours)	Acreage by Percent Ground Cover Categories						
							Category 0: 0%	Category: Trace	Category 1: 1-10%	Category 2: 10-25%	Category 3: 25-50%	Category 4: 50-75%	Category 5: 75-100%
<i>Acer palmatum</i>	Japanese Maple	0.0	0.0	0.0	N/A		4.48	0.0	0.0	0.0	0.0	0.0	0.0
<i>Acer platanoides</i>	Norway Maple	0.0	0.0	0.0	N/A		4.48	0.0	0.0	0.00	0.0	0.00	0.0
<i>Ailanthus altissima</i>	Tree-of-Heaven	0.0	0.0	0.0	N/A		4.48	0.0	0.0	0.0	0.0	0.0	0.0
<i>Alliaria petiolata</i>	Garlic Mustard	0.0	4.5	100.0	None		0.00	4.5	0.0	0.0	0.0	0.0	0.0
<i>Artemisia vulgaris</i>	Common Mugwort	0.0	0.0	0.0	N/A		4.48	0.0	0.0	0.0	0.0	0.0	0.0
<i>Arthraxon hispidus</i>	Small Carpgrass	0.0	0.0	0.0	N/A		4.48	0.0	0.0	0.0	0.0	0.0	0.0
<i>Berberis thunbergii</i>	Japanese Barberry	4.5	4.5	100.0	None		0.00	0.0	4.5	0.0	0.0	0.0	0.0
<i>Cardamine impatiens</i>	Narrow-leaved Bittercress	0.0	0.0	0.0	N/A		4.48	0.0	0.0	0.0	0.0	0.0	0.0
<i>Catalpa bignonioides</i>	Northern Catalpa	0.0	0.0	0.0	N/A		4.48	0.0	0.0	0.0	0.0	0.0	0.0
<i>Celastrus orbiculatus</i>	Asiatic Bittersweet	0.0	4.5	100.0	Control - Treat Fruiting Plants	1	0.00	4.5	0.0	0.0	0.00	0.0	0.0
<i>Centurea</i> sp.	Knapweed sp.	0.0	0.0	0.0	N/A		4.48	0.0	0.0	0.0	0.0	0.0	0.0
<i>Cirsium arvense</i>	Canada Thistle	0.0	0.0	0.0	N/A		4.48	0.0	0.0	0.0	0.0	0.0	0.0
<i>Dipsacus sylvestris</i>	Teasel	0.0	0.0	0.0	N/A		4.48	0.0	0.00	0.0	0.0	0.0	0.0
<i>Eleaagnus umbellata</i>	Autumn Olive	0.0	4.5	100.0	None		0.00	4.5	0.0	0.0	0.0	0.0	0.0
<i>Euonymus alata</i>	Winged Burning Bush	0.0	4.5	100.0	Control - Treat Fruiting Plants	4	0.00	4.5	0.0	0.0	0.0	0.0	0.00
<i>Iris pseudoacris</i>	Yellow Iris	0.0	0.0	0.0	N/A		4.48	0.0	0.0	0.0	0.0	0.0	0.0
<i>Lespedeza cuneata</i>	Chinese Bushclover	0.0	0.0	0.0	N/A		4.48	0.0	0.0	0.0	0.0	0.0	0.0
<i>Ligustrum obtusifolium</i>	Border Privet	0.0	0.0	0.0	N/A		4.48	0.0	0.00	0.0	0.0	0.0	0.0
<i>Lonicera japonica</i>	Japanese Honeysuckle	0.0	0.0	0.0	N/A		4.48	0.0	0.0	0.0	0.0	0.0	0.0
<i>Lonicera maackii</i>	Amur Honeysuckle	0.0	0.0	0.0	N/A		4.48	0.0	0.0	0.0	0.0	0.0	0.0
<i>Lonicera morrowii</i>	Morrow's Honeysuckle	0.0	0.0	0.0	N/A		4.48	0.0	0.0	0.0	0.00	0.0	0.0
<i>Lysimachia nummularia</i>	Moneywort	0.0	0.0	0.0	N/A		4.48	0.0	0.0	0.0	0.0	0.0	0.0
<i>Lythrum salicaria</i>	Purple Loosestrife	0.0	0.0	0.0	N/A		4.48	0.0	0.0	0.0	0.0	0.0	0.0
<i>Malus toringo</i>	Toringo Crabapple	0.0	0.0	0.0	N/A		4.48	0.0	0.0	0.0	0.0	0.0	0.0
<i>Microstegium vimineum</i>	Japanese Stiltgrass	4.5	4.5	100.0	None		0.00	0.0	4.5	0.0	0.0	0.0	0.0
N/A	Non-native, cool season grass	0.0	0.0	0.0	N/A		4.48	0.0	0.0	0.0	0.0	0.0	0.0
<i>Phalaris arundinacea</i>	Reed Canary Grass	0.0	0.0	0.0	N/A		4.48	0.0	0.0	0.0	0.0	0.0	0.0
<i>Phragmites australis</i>	Common Reed	0.0	0.0	0.0	N/A		4.48	0.0	0.0	0.0	0.0	0.0	0.0
<i>Polygonum cuspidatum</i>	Japanese Knotweed	0.0	0.0	0.0	N/A		4.48	0.0	0.0	0.0	0.0	0.0	0.0
<i>Polygonum perfoliatum</i>	Mile-a-Minute	0.0	0.0	0.0	N/A		4.48	0.0	0.0	0.0	0.0	0.0	0.0
<i>Pyrus calleryana</i>	Callery Pear	0.0	0.0	0.0	N/A		4.48	0.0	0.0	0.0	0.0	0.0	0.0
<i>Ranunculus ficaria</i>	Lesser Celandine	0.0	0.0	0.0	N/A		4.48	0.0	0.0	0.0	0.0	0.0	0.0
<i>Robinia pseudoacacia</i>	Black Locust	0.0	0.0	0.0	N/A		4.48	0.0	0.0	0.0	0.0	0.0	0.0
<i>Rosa multiflora</i>	Multiflora Rose	0.0	4.5	100.0	None		0.00	4.5	0.0	0.0	0.0	0.0	0.0
<i>Rubus phoenicolasius</i>	Wineberry	4.5	4.5	100.0	None		0.00	0.0	4.5	0.0	0.0	0.0	0.0
<i>Securigera varia</i>	Crown vetch	0.0	0.0	0.0	N/A		4.48	0.0	0.0	0.0	0.0	0.0	0.0
<i>Viburnum dilatatum</i>	Linden Viburnum	0.0	0.0	0.0	N/A		4.48	0.0	0.0	0.0	0.0	0.0	0.0
<i>Viburnum sieboldii</i>	Siebold's Viburnum	0.0	0.0	0.0	N/A		4.48	0.0	0.0	0.0	0.0	0.0	0.0
<i>Wisteria floribunda</i>	Japanese Wisteria	0.0	0.0	0.0	N/A		4.48	0.0	0.0	0.0	0.0	0.0	0.0
Total LOE						5							

¹ The Infestation Index Score combines the extent of acreage infested and the intensity of the infestation. It was derived by multiplying the cover class number by the number of acres within each cover class.

**Hopewell Valley Community Stewardship Plan
Friends of Hopewell Valley Open Space**

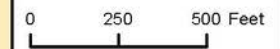


**Hopewell Valley
Community
Stewardship Plan**

**Lipp/Lewellen Preserve
Map 1
2007 Aerial Photography**

Legend

-  Preserve Access Point
-  FohVOS Preserves
-  Early Successional Lands
-  Trails



**Hopewell Valley Community Stewardship Plan
Friends of Hopewell Valley Open Space**

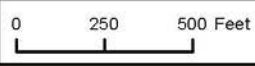


**Hopewell Valley
Community
Stewardship Plan**

**Lipp/Lewellen Preserve
Map 2
1930 Aerial Photography**

Legend

-  Preserve Access Point
-  FohVOS Preserves
-  Early Successional Lands
-  Trails



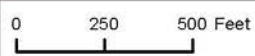
Hopewell Valley Community Stewardship Plan
Friends of Hopewell Valley Open Space



**Hopewell Valley
Community
Stewardship Plan**

**Lipp/Lewellen Preserve
Map 3
Topography**

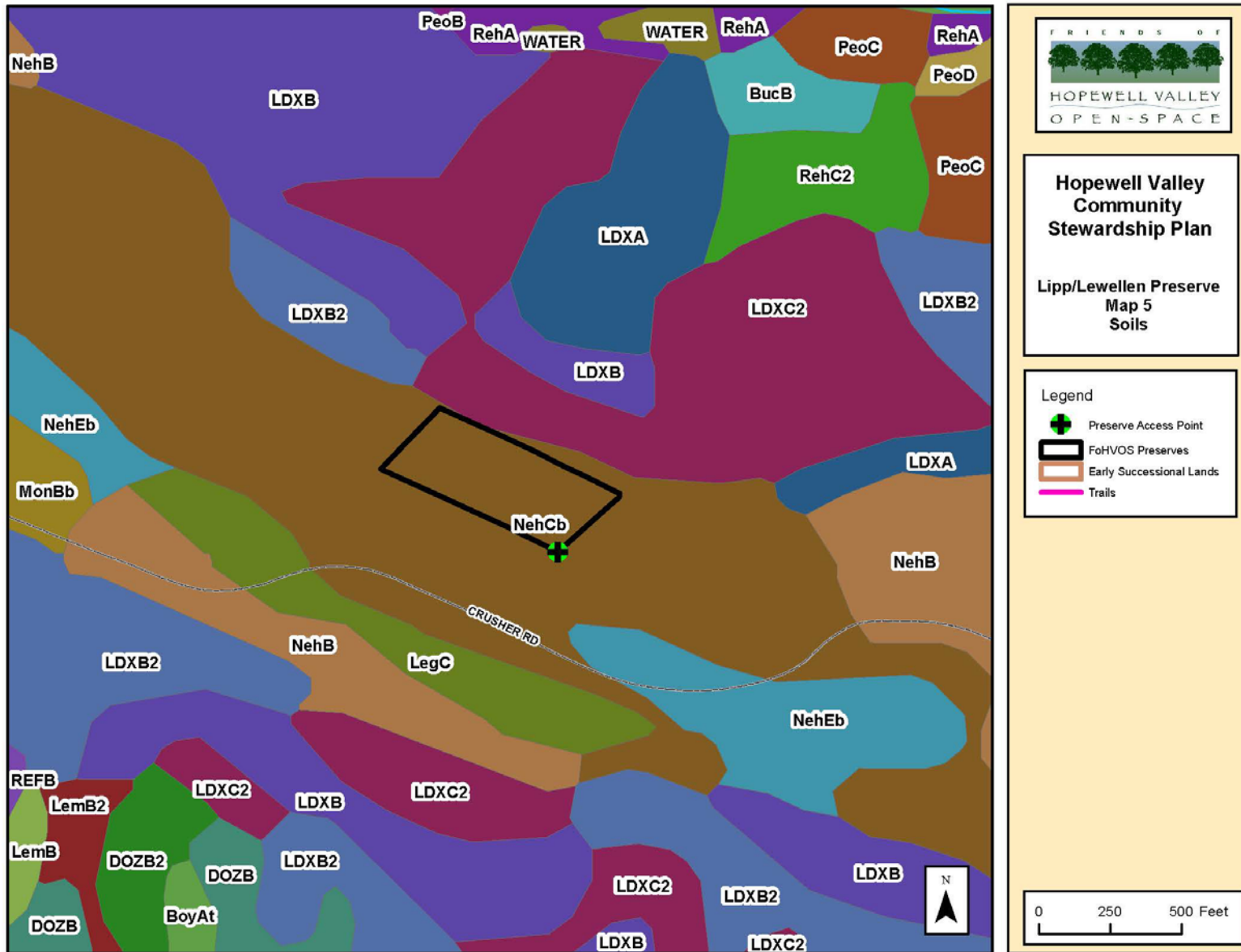
- Legend**
- Preserve Access Point
 - FoHVOS Preserves
 - Early Successional Lands
 - Trails



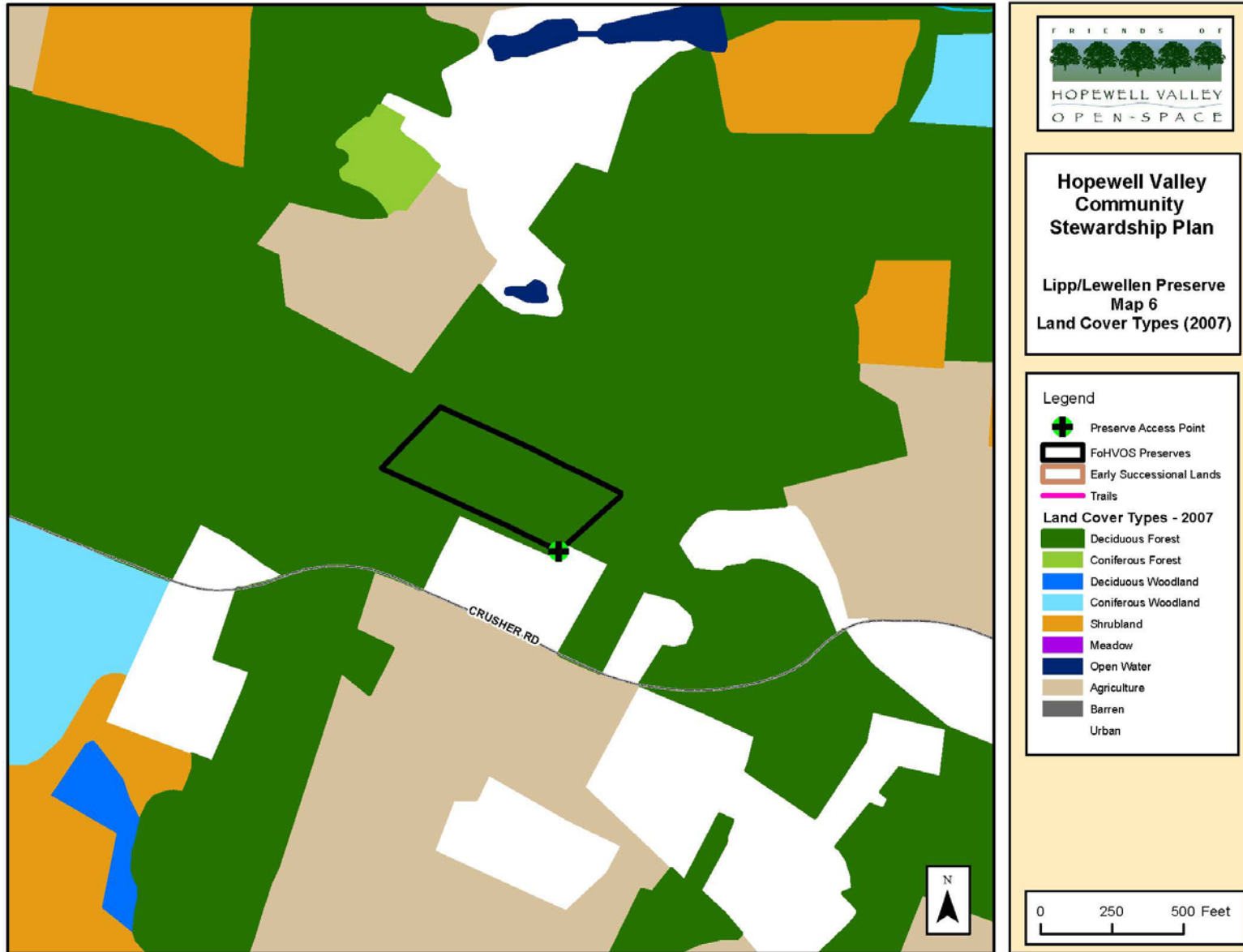
Hopewell Valley Community Stewardship Plan
Friends of Hopewell Valley Open Space



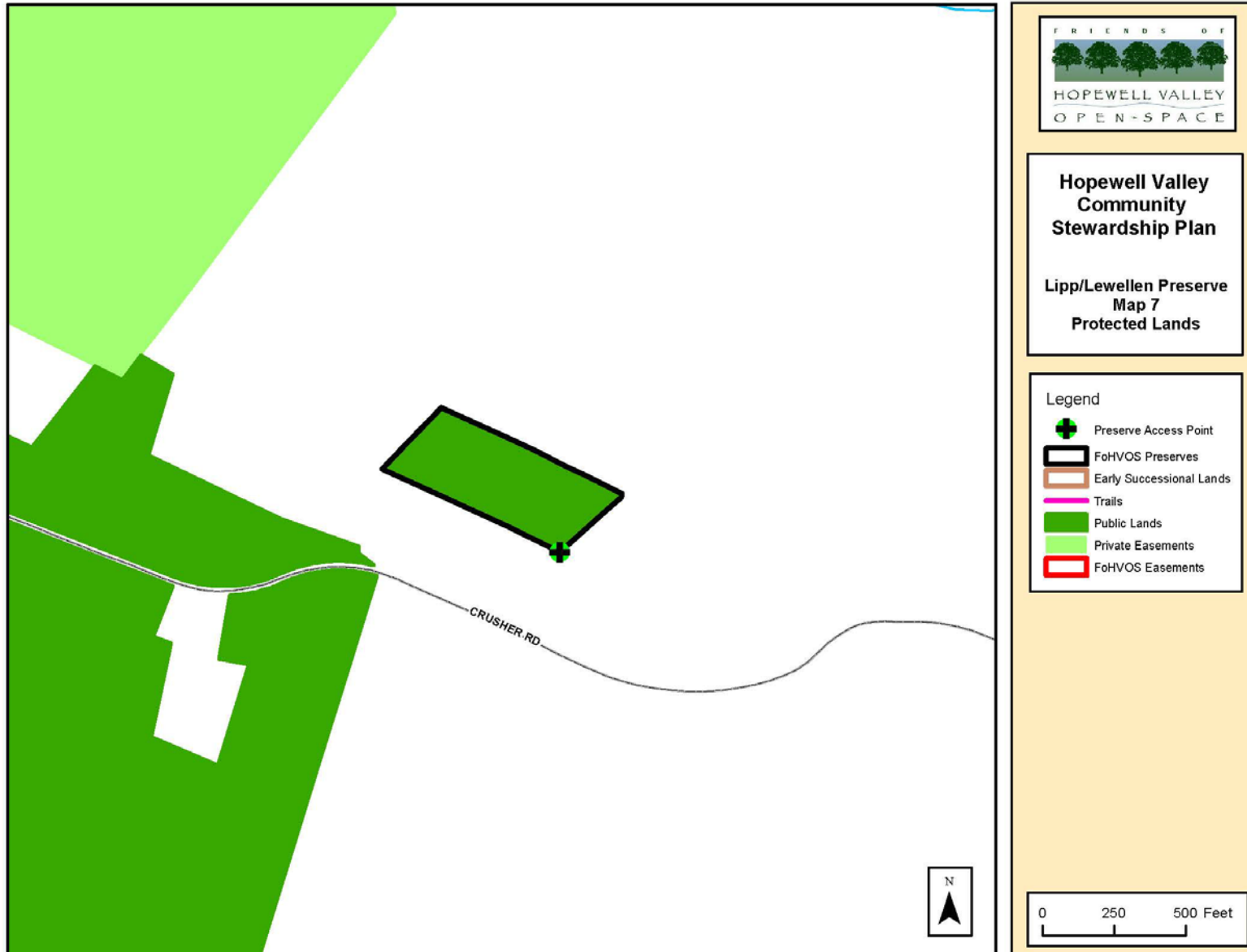
**Hopewell Valley Community Stewardship Plan
Friends of Hopewell Valley Open Space**



Hopewell Valley Community Stewardship Plan
Friends of Hopewell Valley Open Space



**Hopewell Valley Community Stewardship Plan
Friends of Hopewell Valley Open Space**



**Hopewell Valley Community Stewardship Plan
Friends of Hopewell Valley Open Space**



Hopewell Valley Community Stewardship Plan
Friends of Hopewell Valley Open Space

