

**Hopewell Valley Community Stewardship Plan
Friends of Hopewell Valley Open Space**

**Appendix 9.
Genovesi Preserve**

Acreage: 3.0

Block and Lot: B20, L18.01

Ownership: FoHVOS (100%)

Year(s) Purchased: 2000

Location & Access: The preserve is located on the south side of Crusher Road, approximately 2.8 miles east of Route 654. Nearest street address: 29 Crusher Road, Hopewell. Parking access is difficult, but available along the road (shoulder is narrow).

Structures: None

Additional property information is summarized in Appendix W. The following Preserve maps are provided at the end of this document:

- Map 1 2007 Aerial Photography
- Map 2 1930 Aerial Photography
- Map 3 Topography
- Map 4 Bedrock Geology
- Map 5 Soils
- Map 6 Land Cover Types (2007)
- Map 7 Protected Lands
- Map 8 Deer Management
- Map 9 Invasive Plant Cover (Relative Infestation Severity for all species)

Website Description:

Genovesi Preserve is situated in Hopewell's Mount Rose section. This parcel protects a portion of the area's forest and features woody plant species such as maple leaf viburnum, black birch, and ironwood. The site was once quarried – a large pit and a stone foundation remain as evidence.

BROAD PROPERTY DESCRIPTION

The Genovesi Preserve (see Map 1) is located in eastern Hopewell Township. The topography (see Map 3) is steep sloping in multiple directions at about 280 feet above sea level.

Based upon analysis of NJDEP's 2007 Land Use/Land Cover dataset, the preserve contains one broad plant community: Deciduous Forest (> 50% canopy) – Upland. The preserve is surrounded by forest and residential parcels. Land Use/Land Cover is summarized in Appendix X and illustrated in Map 6.

Historically the preserve was forest and quarry. Stone foundations and steep topography delineate the quarry areas.

The forest's native species composition is comprised of American beech, tulip tree, ash, black cherry, mazzard cherry, black birch, grape, red oak, hop hornbeam, white wood aster (only on roadside), bitternut hickory, and sedges. Herbaceous plants are found only in small populations. Canopy gaps and much of the understory are colonized by non-native species.

**Hopewell Valley Community Stewardship Plan
Friends of Hopewell Valley Open Space**

The preserve has two types of bedrock geology--the Jurassic (predominant) and Passaic formations. See Map 4.

The preserve has three soil types (see Map 5)--Neshaminy silt loam, 6 to 12 percent slopes, very stony; Neshaminy silt loam, 12 to 30 percent slopes, very rubbly; and Neshaminy silt loam, 2 to 6 percent slopes. The preserve's soils are described in Appendix Y.

CONSERVATION VALUES

Based on an analysis involving the ranking of ecological values and threats (See Community Stewardship Plan text), the Preserve has a weighted Ecological Value of 25-50%. See Appendix A for a description of ranking factors.

Forest and Woodland Communities: The preserve is part of the Mount Rose large forest patch.

The forest patch found on the Preserve and surrounding area is an important stop-over habitat (spring and fall resting and feeding) for migratory species. The spottiness of the woodland shrub layer reduces the value of nesting and successful breeding for bird species.

Old forest: The majority of the preserve was forested in the 1930s, except for the quarry area. See Map 2.

Early Successional Communities:

Shrublands: N/A

Meadows/Grasslands: N/A

Waterbodies: N/A

Rare Species:

Rare Plants: None.

Rare Animals: The Landscape Project has identified the Preserve as ranked for species of State Endangered, Threatened, and Special Concern Species. The Preserve has suitable wood turtle habitat in the eastern areas. See Appendix L for a list of species.

THREATS

Deer: The understory and herb layers are severely browsed. Regeneration of the native shrub and canopy layer are currently non-existent.

Invasive species: In 2008 staff began walk-through surveys for emerging invasive species on all preserves. Mapping documented each species and its population size. No species were detected. See www.njisst.org for the current status of emerging invasive species at the Preserve.

In 2011 staff completed surveys for invasive plant species on all preserves (see Map 9). Mapping documented each species found and its population size (See Table 1 below). The five species with the highest infestation scores include: Winged Burning Bush, Japanese Honeysuckle, Garlic Mustard, Wineberry, and Multiflora Rose.

Other: N/A

**Hopewell Valley Community Stewardship Plan
Friends of Hopewell Valley Open Space**

STRATEGIES and ACTIONS

Forest and Woodland Habitat Stewardship: Annual surveys for and eradication of emerging invasive species is a high priority at this Preserve.

No action is recommended for widespread invasive species, except for winged burning bush and Asiatic bittersweet. All fruiting and flowering individuals should be treated with basal bark or cut stump (in the case of vines on trees). Reduced deer density will allow the native plant communities to recover and compete with all other widespread invasive species on a long-term basis.

Early Successional Habitat Stewardship: N/A

Deer Management: The preserve is enrolled in the DMP for bow hunting. See Map 8 for delineations of the 150' and 450' safety zones and hunting status.

Rare Species Management: N/A

Neighboring Lands: See Map 7 for adjacent protected lands.

Waterbodies Management: N/A

Undesirable Activities Management: N/A

Scientific Research Assessment: The Preserve is available for scientific research.

Recreational Opportunities Assessment: The preserve is too small to support a trail and vehicular access is difficult.

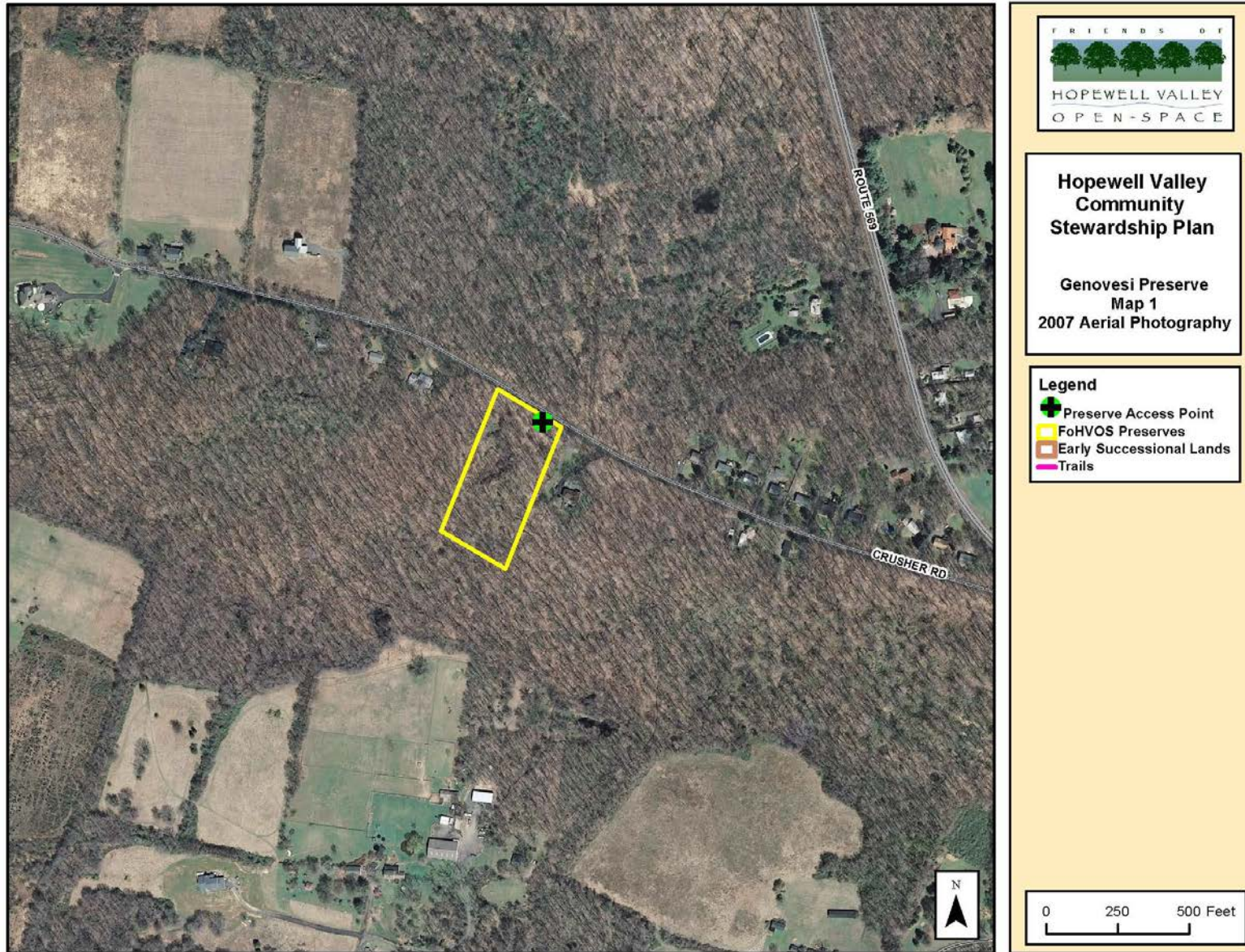
**Hopewell Valley Community Stewardship Plan
Friends of Hopewell Valley Open Space**

Table 1. Invasive Plants – Species Abundance and Treatment Recommendations

Scientific Name	Common Name	Infestation Index Score ¹	Total Acres Present	Percent of Preserve Area Present	Treatment Recommendation	LOE Estimate (Hours)	Acreage by Percent Ground Cover Categories						
							Category 0: 0%	Category: Trace	Category 1: 1-10%	Category 2: 10-25%	Category 3: 25-50%	Category 4: 50-75%	Category 5: 75-100%
<i>Acer palmatum</i>	Japanese Maple	0.0	0.0	0.0	N/A		3.16	0.0	0.0	0.0	0.0	0.0	0.0
<i>Acer platanoides</i>	Norway Maple	0.0	0.0	0.0	N/A		3.16	0.0	0.0	0.00	0.0	0.00	0.0
<i>Ailanthus altissima</i>	Tree-of-Heaven	0.0	0.0	0.0	N/A		3.16	0.0	0.0	0.0	0.0	0.0	0.0
<i>Alliaria petiolata</i>	Garlic Mustard	3.9	1.7	52.8	None		1.49	0.0	0.1	0.9	0.6	0.0	0.0
<i>Artemisia vulgaris</i>	Common Mugwort	0.0	0.0	0.0	N/A		3.16	0.0	0.0	0.0	0.0	0.0	0.0
<i>Arthraxon hispidus</i>	Small Carpgrass	0.0	0.0	0.0	N/A		3.16	0.0	0.0	0.0	0.0	0.0	0.0
<i>Berberis thunbergii</i>	Japanese Barberry	0.0	1.0	31.3	None		2.17	1.0	0.02	0.0	0.0	0.0	0.0
<i>Cardamine impatiens</i>	Narrow-leaved Bittercress	0.0	0.0	0.0	N/A		3.16	0.0	0.0	0.0	0.0	0.0	0.0
<i>Catalpa bignonioides</i>	Northern Catalpa	0.0	0.0	0.0	N/A		3.16	0.0	0.0	0.0	0.0	0.0	0.0
<i>Celastrus orbiculatus</i>	Asiatic Bittersweet	2.0	1.7	52.2	Control - Treat Fruiting Plants	10	1.51	0.0	1.5	0.1	0.1	0.0	0.0
<i>Centurea sp.</i>	Knapweed sp.	0.0	0.0	0.0	N/A		3.16	0.0	0.0	0.0	0.0	0.0	0.0
<i>Cirsium arvense</i>	Canada Thistle	0.0	0.0	0.0	N/A		3.16	0.0	0.0	0.0	0.0	0.0	0.0
<i>Dipsacus sylvestris</i>	Teasel	0.0	0.0	0.0	N/A		3.16	0.0	0.00	0.0	0.0	0.0	0.0
<i>Eleaagnus umbellata</i>	Autumn Olive	0.0	0.0	0.0	N/A		3.16	0.0	0.0	0.0	0.0	0.0	0.0
<i>Euonymus alata</i>	Winged Burning Bush	7.4	2.1	64.9	Control - Treat Fruiting Plants	30	1.11	0.1	0.2	0.2	0.5	0.0	1.08
<i>Iris pseudoacris</i>	Yellow Iris	0.0	0.0	0.0	N/A		3.16	0.0	0.0	0.0	0.0	0.0	0.0
<i>Lespedeza cuneata</i>	Chinese Bushclover	0.0	0.0	0.0	N/A		3.16	0.0	0.0	0.0	0.0	0.0	0.0
<i>Ligustrum obtusifolium</i>	Border Privet	0.0	0.0	0.0	N/A		3.16	0.0	0.00	0.0	0.0	0.0	0.0
<i>Lonicera japonica</i>	Japanese Honeysuckle	6.2	2.7	84.8	None		0.48	0.0	0.4	1.1	1.0	0.2	0.0
<i>Lonicera maackii</i>	Amur Honeysuckle	0.0	0.0	0.0	N/A		3.16	0.0	0.0	0.0	0.0	0.0	0.0
<i>Lonicera morrowii</i>	Morrow's Honeysuckle	0.0	0.0	0.0	N/A		3.16	0.0	0.0	0.0	0.00	0.0	0.0
<i>Lysimachia nummularia</i>	Moneywort	0.0	0.0	0.0	N/A		3.16	0.0	0.0	0.0	0.0	0.0	0.0
<i>Lythrum salicaria</i>	Purple Loosestrife	0.0	0.0	0.0	N/A		3.16	0.0	0.0	0.0	0.0	0.0	0.0
<i>Malus toringo</i>	Toringo Crabapple	0.0	0.0	0.0	N/A		3.16	0.0	0.0	0.0	0.0	0.0	0.0
<i>Microstegium vimineum</i>	Japanese Stiltgrass	1.9	1.2	36.7	None		2.00	0.0	0.8	0.0	0.3	0.0	0.04
N/A	Non-native, cool season grass	0.0	0.0	0.0	N/A		3.16	0.0	0.0	0.0	0.0	0.0	0.0
<i>Phalaris arundinacea</i>	Reed Canary Grass	0.0	0.0	0.0	N/A		3.16	0.0	0.0	0.0	0.0	0.0	0.0
<i>Phragmites australis</i>	Common Reed	0.0	0.0	0.0	N/A		3.16	0.0	0.0	0.0	0.0	0.0	0.0
<i>Polygonum cuspidatum</i>	Japanese Knotweed	0.0	0.0	0.0	N/A		3.16	0.0	0.0	0.0	0.0	0.0	0.0
<i>Polygonum perfoliatum</i>	Mile-a-Minute	0.0	0.0	0.0	N/A		3.16	0.0	0.0	0.0	0.0	0.0	0.0
<i>Pyrus calleryana</i>	Callery Pear	0.0	0.0	0.0	N/A		3.16	0.0	0.0	0.0	0.0	0.0	0.0
<i>Ranunculus ficaria</i>	Lesser Celandine	0.0	0.0	0.0	N/A		3.16	0.0	0.0	0.0	0.0	0.0	0.0
<i>Robinia pseudoacacia</i>	Black Locust	0.0	0.0	0.0	N/A		3.16	0.0	0.0	0.0	0.0	0.0	0.0
<i>Rosa multiflora</i>	Multiflora Rose	3.2	1.5	47.2	None		1.67	0.0	0.3	0.7	0.5	0.0	0.0
<i>Rubus phoenicolasius</i>	Wineberry	3.9	2.3	72.8	None		0.86	0.0	1.6	0.04	0.3	0.3	0.0
<i>Securigera varia</i>	Crown vetch	0.0	0.0	0.0	N/A		3.16	0.0	0.0	0.0	0.0	0.0	0.0
<i>Viburnum dilatatum</i>	Linden Viburnum	0.0	0.0	0.0	N/A		3.16	0.0	0.0	0.0	0.0	0.0	0.0
<i>Viburnum sieboldii</i>	Siebold's Viburnum	0.0	0.0	0.0	N/A		3.16	0.0	0.0	0.0	0.0	0.0	0.0
<i>Wisteria floribunda</i>	Japanese Wisteria	0.0	0.0	0.0	N/A		3.16	0.0	0.0	0.0	0.0	0.0	0.0
Total LOE						40							

¹ The Infestation Index Score combines the extent of acreage infested and the intensity of the infestation. It was derived by multiplying the cover class number by the number of acres within each cover class.

**Hopewell Valley Community Stewardship Plan
Friends of Hopewell Valley Open Space**



**Hopewell Valley Community Stewardship Plan
Friends of Hopewell Valley Open Space**



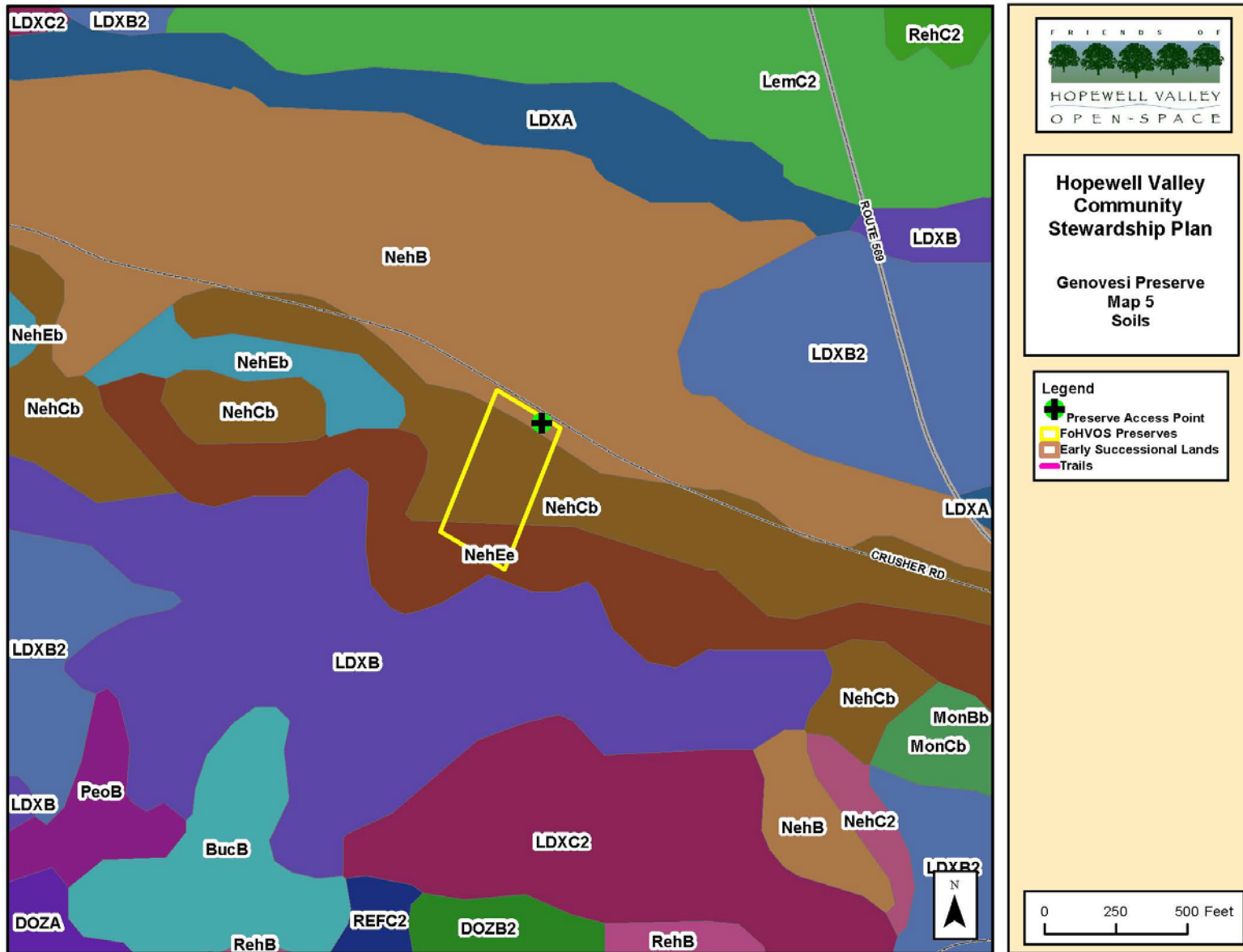
Hopewell Valley Community Stewardship Plan
Friends of Hopewell Valley Open Space



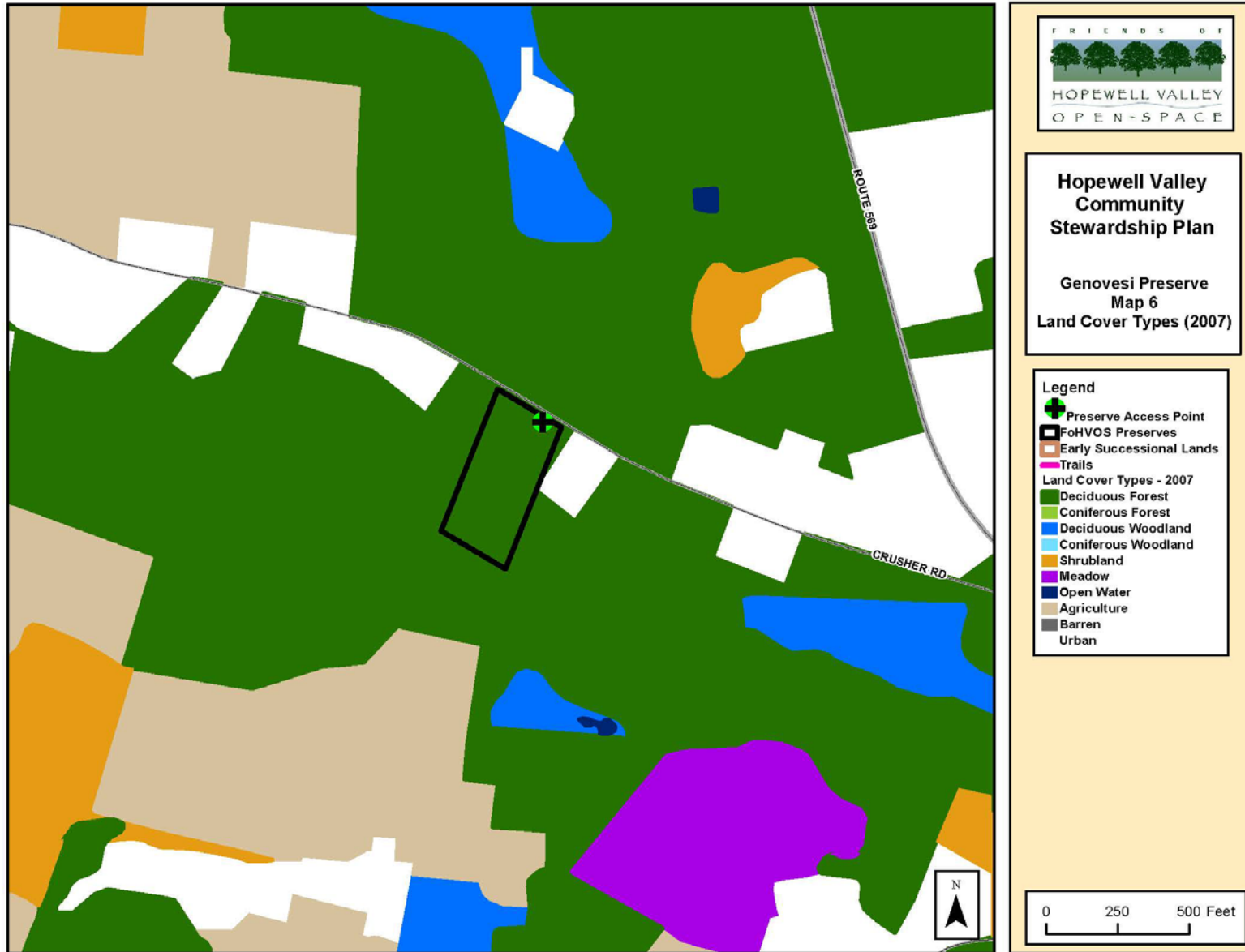
Hopewell Valley Community Stewardship Plan
Friends of Hopewell Valley Open Space



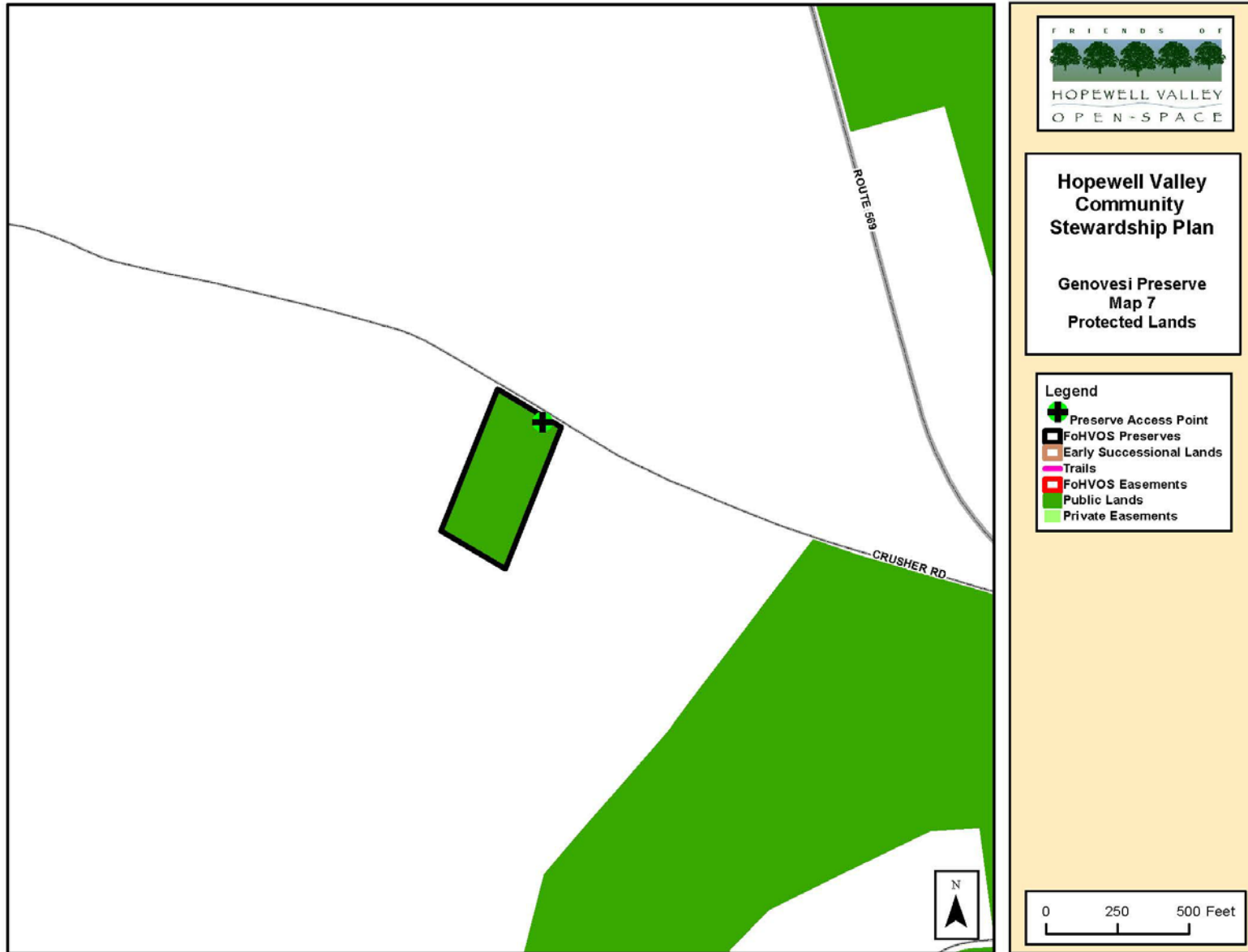
**Hopewell Valley Community Stewardship Plan
Friends of Hopewell Valley Open Space**



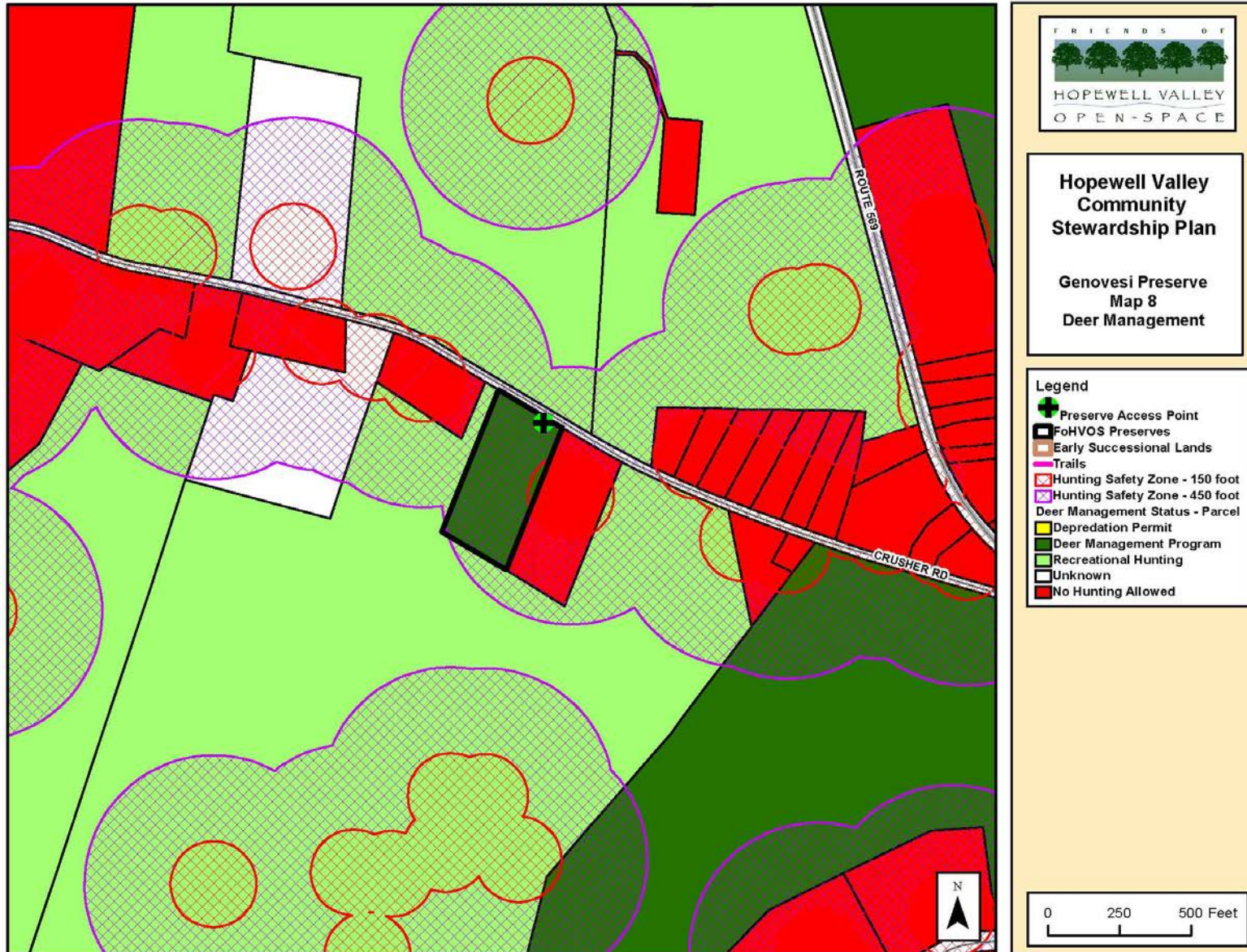
Hopewell Valley Community Stewardship Plan
Friends of Hopewell Valley Open Space



**Hopewell Valley Community Stewardship Plan
Friends of Hopewell Valley Open Space**



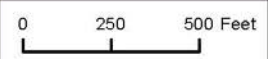
**Hopewell Valley Community Stewardship Plan
Friends of Hopewell Valley Open Space**



**Hopewell Valley
Community
Stewardship Plan**

**Genovesi Preserve
Map 8
Deer Management**

- Legend**
- Preserve Access Point
 - FoHVOS Preserves
 - Early Successional Lands
 - Trails
 - Hunting Safety Zone - 150 foot
 - Hunting Safety Zone - 450 foot
 - Deer Management Status - Parcel**
 - Depredation Permit
 - Deer Management Program
 - Recreational Hunting
 - Unknown
 - No Hunting Allowed



Hopewell Valley Community Stewardship Plan
Friends of Hopewell Valley Open Space

