



NJ Invasive Species
Strike Team

FoHIVOS
FRIENDS OF HOPEWELL VALLEY OPEN SPACE

Strike Team Report August 2019

Update on the Emerald Ash Borer

Emerald Ash Borer Update

The NJ Department of Agriculture (NJDA) has updated their [Emerald Ash Borer page](#). Unfortunately, the borers are now reported in 15 counties and 94 municipalities in New Jersey (see Map below). I've been noticing more and more "blonding" (light tan scraps on bark that seem to appear before any obvious die-back and easier to find than the D-shaped exit holes).

The current thinking is that we are likely to lose 95+% of our ash trees...but we should all be hoping very, very hard that the new biological control agent begins to impact EAB populations (NJDA has released them at 21 locations around the state), allowing the many millions of existing ash seedlings to become future ash trees!

See [EAB detection list here](#).

Michael Van Clef, Ph.D.
Strike Team Program Director

EAB Detections in New Jersey

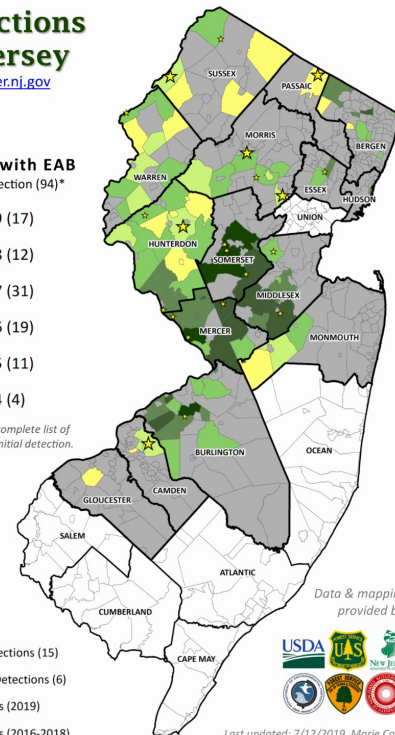
emeraldashborer.nj.gov

Municipalities with EAB by Year of Initial Detection (94)*

- 2019 (17)
- 2018 (12)
- 2017 (31)
- 2016 (19)
- 2015 (11)
- 2014 (4)

*See following page for complete list of municipalities by year of initial detection.

- ☒ Counties with EAB Detections (15)
- ☐ Counties with no EAB Detections (6)
- ★ Bio-control release sites (2019)
- Bio-control release sites (2016-2018)



Data & mapping
provided by:



Last updated: 7/12/2019, Marie Cook

FED UP WITH INVASIVES?

LET'S EAT THEM!

Eat the Invasives Potluck

Thursday, October 3rd, 6-9 pm
Friends of Frelinghuysen Arboretum
Morristown, NJ 07960

This event is FREE, but space is limited.

RSVP Here!

Wondering what to bring to an invasive species potluck? Locally hunted venison, foraged berries and herbs, or anything from your garden will be welcome additions. If you missed the wineberry harvest, or are lucky enough not to have any invasives lying around, feel free to bring something wild, homemade, or just local. All are welcome at this event, so please come whether or not your dish is invasive. We look forward to seeing you there!



White-tail deer become great steaks, sausages, burgers, chili...



Autumn Olive makes tangy fruit compote, fruit leather, or jell-o



Garlic mustard goes well in salad, pesto, relish, or slaw

Featuring [IAMAWEED Sumac tea](#) donated by Tama Wong, local forager and IAMA WEED owner

Live and Learn!

The goal of this 'Live and Learn!' feature is to spread newly obtained knowledge provided from Strike Team partners. Please share your expertise! Send news of successes or lessons learned, either big or small, to Mike at mvanclaf@fohvos.org.

The Right Herbicide AND the Right Surfactant

Want to rid yourself of English Ivy, Glossy Buckthorn, Five-leaved Akebia, or Wisteria? After poor results, we've learned over the years with advice from folks like Brian O'Neill of Weeds, Inc. and George Smittee of Tuff Greens how to handle these species.



The key for all these species is using a surfactant specially designed to break through thick and/or waxy leaves (e.g., Clean Cut), which allows the herbicide to enter the leaf and kill the plants.

For Akebia, we tried our typical FS-1 mixture (See Herbicide Use Suggestions and Mixing Table at our [website Info Center](#)) – unsuccessfully until adding Clean Cut surfactant, which reduced the population by over 95% with a single application!

Let's hope that you don't have Kudzu, but if you did, then you might consider using aminopyralid (e.g., Milestone). This herbicide is particularly effective at eliminating plants in the bean family (including Wisteria). Caution is required as there are native species in the same family (e.g., Redbud and numerous wildflowers) that can be impacted if nearby the spraying area.



Glossy Buckthorn

Five-leaf Akebia (chocolate vine)

The Strike Team needs your help to fight invasive species throughout New Jersey. By making a membership donation, you directly fund our efforts to keep invasive species at bay and protect our native plants and wildlife. Donate through the link below!

[Donate](#)

[Visit our Website](#)

[Facebook](#)

Contributing Partners

If you would like to know how to become a Strike Team Contributing Partner, please contact lhovath@fohvos.org



Cranbury
Township
Environmental
Comission



Steering Committee

John Cecil
New Jersey Audubon

Dr. Emile Devito
New Jersey Conservation Foundation

Keri Green
New Jersey Highlands Council

Kenneth H. Klipstein, II
New Jersey Water Supply Authority

Dr. Michael Van Clef
Friends of Hopewell Valley Open Space

Lisa Wolff
Friends of Hopewell Valley Open Space

Technical Advisory Committee

Thom Almendinger
Duke Farms

Michele Bakacs
NJ Agricultural Experiment Station

Kerry Barringer
Flora of North America Association

Jeanette Bowers-Altman
New Jersey Division of Fish & Wildlife

Chris Doyle
SOLitude Lake Management

Art Gover
The Pennsylvania State University

Rachel Mackow
Wild Ridge Plants

Shanna Madsen
New Jersey Division of Fish & Wildlife

Mark Mayer
New Jersey Department of Agriculture

Christopher Smith
New Jersey Division of Fish & Wildlife

Robert Somes
New Jersey Division of Fish & Wildlife

Carole Stanko
New Jersey Division of Fish & Wildlife

Staff

Lisa Wolff, *Executive Director*

Dr. Michael Van Clef, *Stewardship Director*

Beth Craighead, *Land Steward*

Brian Kubin, *Land Steward*

Michael Bellaus, *Land Steward*

Gemma Milly, *Land Steward*

Tyler Christensen, *Land Steward*

Leslie Kuchinski, *Operations Manager*

Logan Horvath, *Program Manager*

Margaret Spencer, *Strike Team Coordinator*

