

State of New Jersey Invasive Species



FoHVOS New Jersey
Invasive Species
Strike Team

Presented by Michael Van Clef, Ph.D.,
Strike Team Program Director



FoHVOS New Jersey
Invasive Species
Strike Team

Our Mission

We work to protect natural lands, with their full abundance and diversity of native plants and animals, from future damage through coordinated strategic invasive species management. Active mapping, data analysis, engaging in community outreach and training, and practicing early detection and rapid response (ED/RR) to new threats; we are the only entity solely dedicated to protecting rare species and special places from invasive species throughout New Jersey.

STEWARDSHIP = *Mitigation of human impacts on natural systems*

Our Methods

Mapping, Data Analysis & Reporting: *Gather / synthesize data and update comprehensive statewide database made available to all, free of charge.*

Outreach: *Publicizing threats posed by invasive species and value of native plant gardening through public programs, tabling events, and plant buy-backs.*

Training: *Regularly working in the community, providing workshops to professionals and the public covering information about invasive species threats, control techniques and fostering local Strike Teams to amplify our efforts.*

Search & Eradicate: *Early Detection and Rapid Response is key to the success of preventing future damage from invasive species. As resources allow, infestations are either eradicated or controlled through a strategic plan.*



FoHVOS Strike Team Staff

- Jenn Rogers, *FoHVOS Executive Director*
- Mike Van Clef, *Stewardship Director & Strike Team Program Director*
- Dana Christensen, *Land Steward*
- Beth Craighead, *Senior Land Steward*
- Brian Kubin, *Land Steward*
- Leslie Kuchinski, *Operations Manager*
- Kaitlin Muccio, *Land Steward*

Steering Committee

- Emile DeVito, *New Jersey Conservation Foundation*
- Ken Klipstein, *New Jersey Water Supply Authority*
- John Landau, *Friends of Foote's Pond Wood*
- Kristi MacDonald, *Raritan Headwaters Association*

Technical Advisory Committee

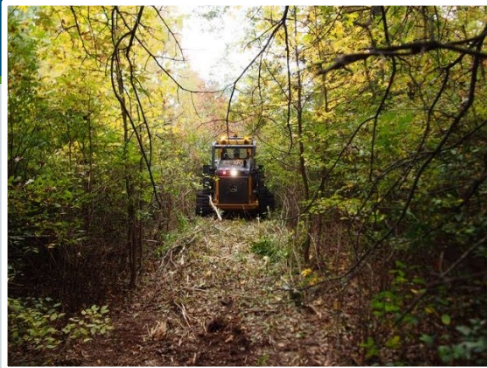
- Michele Bakacs, *Rutgers Cooperative Extension*
- Kerry Barringer, *Flora of North America Association*
- Danielle Dyson, *NJ Bureau of Marine Fisheries*
- Art Gover, *The Pennsylvania State University*
- Rachel Mackow, *Wild Ridge Plants*
- Emily Mayer, *NJDEP Bureau of Freshwater and Biological Monitoring*
- Ben Pisano, *NJ Forest Service*
- Christopher Smith, *NJ Fish & Wildlife*
- Robert Somes, *NJ Fish & Wildlife*

Volunteer Stewardship Teams

- Friends of Great Swamp
- Watchung Reservation Invasive Plant (WRIP) Strike Force
- Ridgeview Woods
- Foote's Pond
- And over 20 more!

“The lesson I take from more than a decade of volunteer and professional land stewardship is that remarkable progress is the predictable result of steady, low-technology land management.”

- Jennifer Hillmer, Land Steward

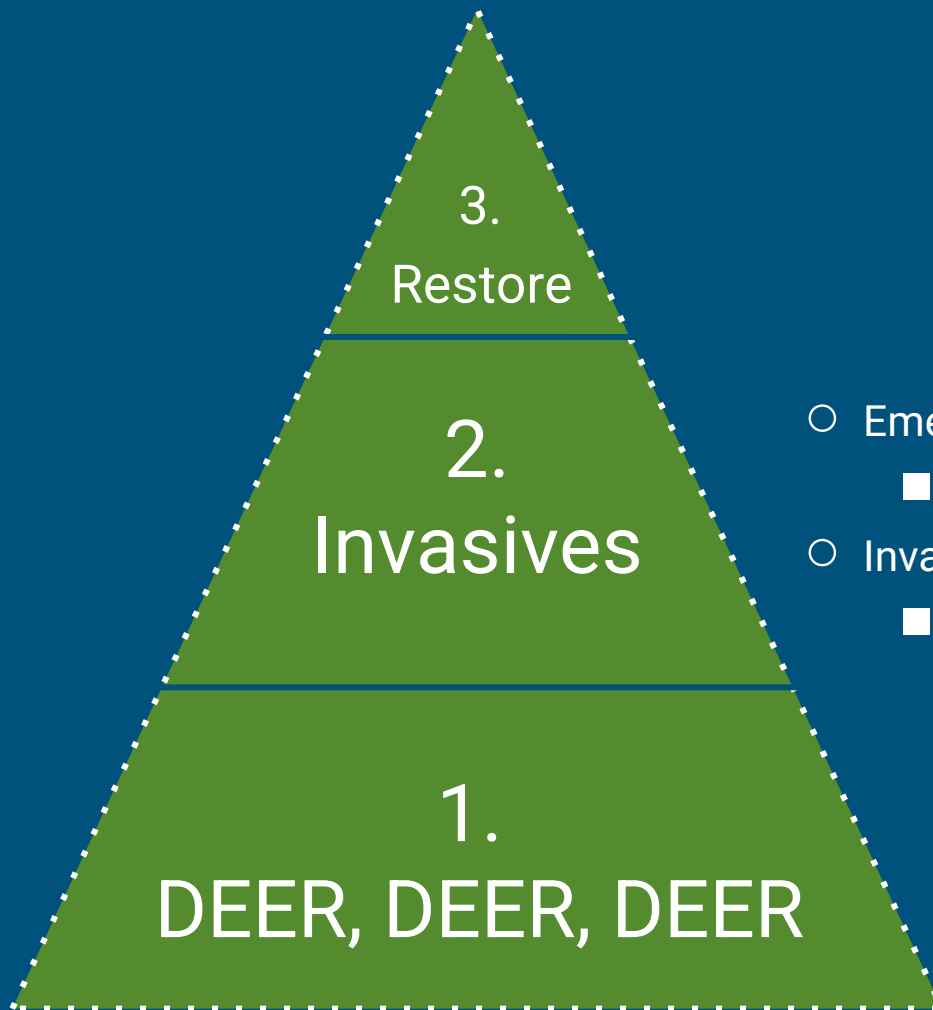


Volunteer Stewardship Teams Secrets to Success



- > **Good communication with landowner**
- > **Core of 1-3 group leaders and a pool of at least 10-15 available volunteers**
- > **Predictable workdays (e.g., every other Saturday from 9am-Noon) allowing a larger volunteer pool to plug into efforts as their time allows.**
- > **Create and follow a concise long-term plan with annual work plans that identify digestible tasks that can be ‘checked off’**
- > **Include the fun stuff too! Invasive control alone is much less rewarding without some planting of native trees, shrubs, and wildflowers.**
- > **Lean on each other’s expertise!**

The Stewardship Effort Hierarchy



Invasive Species Strategy

- Emerging Invasive Species Control / Eradication
 - Stage 0, then Stage 1, etc.
- Invasives on High Conservation Value Areas
 - Rare species habitat, old forests, etc.

2024 Target Species

84 plants + 49 “animals” =

133 TARGET SPECIES



Target and Watch Species

- Stage 0 = 131
- Stage 1 = 34
- Stage 2 = 26
- Stage 3 = 14

• 74 Watch Species

• 97 Widespread Species

Considering Climate Change and Regional Lists

- Utilization of comparative state level listings into comprehensive regional list
- Utilization of current distributions and models to predict invasive species movement over the next 50 years
 - Special notice on **"SLEEPERS"** that occur in planted landscapes but haven't been able to move into natural areas...but that can change...
 - English Ivy, Wintercreeper, Trifoliate Orange, Porcelainberry, etc.



Sources: Northeast Regional Invasive Species and Climate Change (RISCC) Management Network and Research conducted by UMASS Amherst

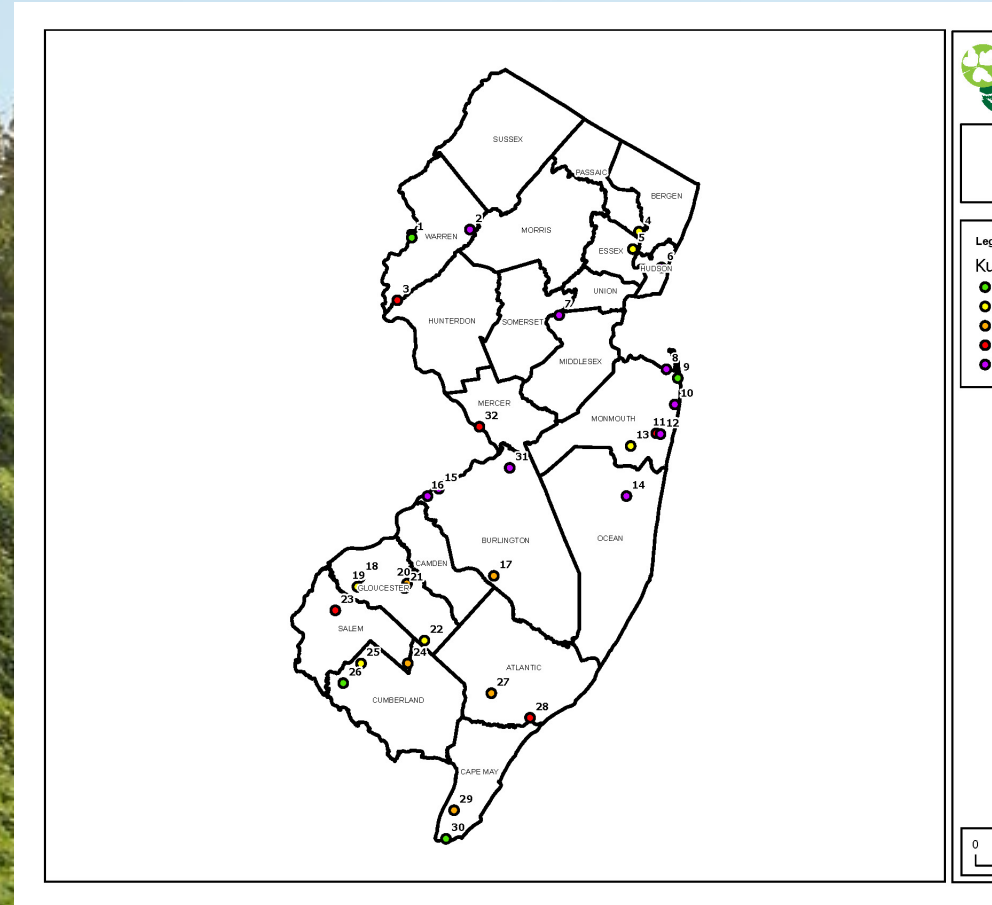
Some Quick Highlights

Clarifications

- Emerging – Stage 0 (certain potential)
- Watch – Stage 0 (uncertain potential) –
Maintain separate from Do Not Plant List

New Emerging Species

- Rush Skeletonweed
- Sticky Sage
- Freshwater Drum



Species Number Summary - 2024

Category	Note	Number of Species	2023	2022	2021	2020
Plants - Widespread Invasive Species	Species considered to be widespread and causing significant harm in natural areas	50	50	50	48	39
Plants - Emerging - NJISST Target Species	Species selected for target list inclusion	84	100	99	94	106
Plants - Emerging - NJISST Watch Species	Species may show invasive potential in the near future	65	42	42	47	40
Animals, Insects, Pathogens - Widespread Invasive Species	Species considered to be widespread and causing significant harm in natural areas	47	47	45	45	45
Animals, Insects, Pathogens - Emerging - NJISST Target Species	Species selected for target list inclusion, or effective population reduction practices available	49	45	45	42	37
Animals, Insects, Pathogens - Emerging - NJISST Watch Species	Species may show invasive potential in the near future or no effective population reduction / eradication practices available	9	7	7	9	10
Totals		304	291	288	285	277



United States Forest Service

Goals

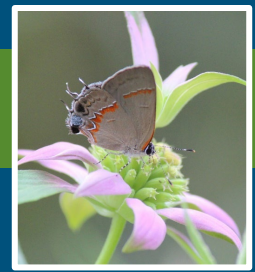
- Strategic control across 9,000 acres
- Implement existing plans for 30 private forest landowners
- Develop Forest Stewardship Plan for Higbee WMA
- Eliminate 100 acres of Linden Viburnum
- Restore over 60 acres of dense infestations (control and tree planting)
- Plant 15,000 trees in the Sourlands - 75 private lands plus public lands

Partners

- Mercer County Parks – Baldpate Mountain
- Morris County Parks – Mahlon Dickerson
- New Jersey Audubon – Cape May Point State Park
- Sourland Conservancy – Multiple Private Forest Landowners
- Strike Team - 30 Private Forest Landowners



Contracts



- Essex County Parks
 - Hilltop Reservation
 - Mopping up tremendous efforts to eliminate Japanese Aralia and other species



- Morris County Parks
 - Tourne, Pyramid Mountain, Lewis Morris
 - Pushing back Japanese Aralia and Oriental Photinia



- Morristown National Historic Park
 - Maintaining and Improving relatively clean areas
 - Controlling high priority emerging species



- Princeton
 - Herrontown Woods and Mountain Lakes
 - Pushing back Japanese Aralia (as ED/RR) & others

Results!

Since Inception in 2008

Acres Searched

790,000

Populations Detected

22,000

Eradications Completed

6,700

Important Note!

35% of sites have **NO** emerging species. Plus, 45% of sites have <10 populations





Training & Outreach Efforts - 2023

- Educational Presentations, Tabling Events, and Training Sessions
 - Includes invasives, natives, deer and customized
 - Multiple “Volunteer Stewardship Team” events
 - 20 events reaching over 1,100 people

Proposed Legislation

- Senate, No. 2186 – Greenstein and Smith
 - Prohibits sale of 30 invasive plants and re-establishes NJ Invasive Species Council
 - Examples: Callery Bear, Japanese Barberry, Winged Burning Bush, Mimosa, Chinese Silvergrass, English Ivy, Siebold's Viburnum, European Buckthorn, Japanese Aralia, Mimosa, Butterfly Bush, Japanese & Chinese Wisteria, Weeping Love Grass, Eurasian Water-milfoil
- Support from NJ Forest Task Force, NJ Nursery and Landscape Association, NJ Farm Bureau, NJ State Board of Agriculture
- Passed unanimously in the state Senate and Assembly in December 2023
 - Veto by Governor
 - Reintroduced unchanged as S1029 (required in new session)
 - Awaiting NJDEP amendment requests

Upcoming Event: Annual Community Conference

- Who: Maggie Wasacz and RJ Curcio
- What: County-level 'Volunteer Stewardship Team'
- When: Saturday, June 1 from 10am to 2pm
- Where: Monmouth County Parks – Huber Woods Park
- Why: Learn how to effectively organize multi-site volunteer efforts

Upcoming Event: USFS Private Land Stewardship Workshop

- Who: Chris Hepburn
- What: Private land stewardship
- When: Saturday, July 13, 10am to 12pm
- Where: 1 Lightning Bug Hollow Road, Hardwick Township, NJ
- Why: Learn about private landowner stewardship at home

Upcoming Event: USFS Private Land Stewardship Workshop

- Who: Phil Meldrum
- What: Private land stewardship
- When: **TBD**
- Where: 74 Barry Road, Lambertville, NJ 08530
- Why: Learn about private landowner stewardship at home

Upcoming Event: Potluck Social

- Who: Everyone is invited!
- What: Forage and bring a dish of your favorite wild collected foods
 - If you are new to foraging, please bring your favorite non-foraged dish!
- When: Saturday, October 26 from Noon to 2pm
 - But start thinking about foraging now!
- Where: Private Residence, 219 Lambertville-Hopewell Road, Hopewell
- Why: Fun with friends and colleagues! Eating interesting foods!